

## Importing and exporting your Email or Personal Authentication certificate using Internet Explorer

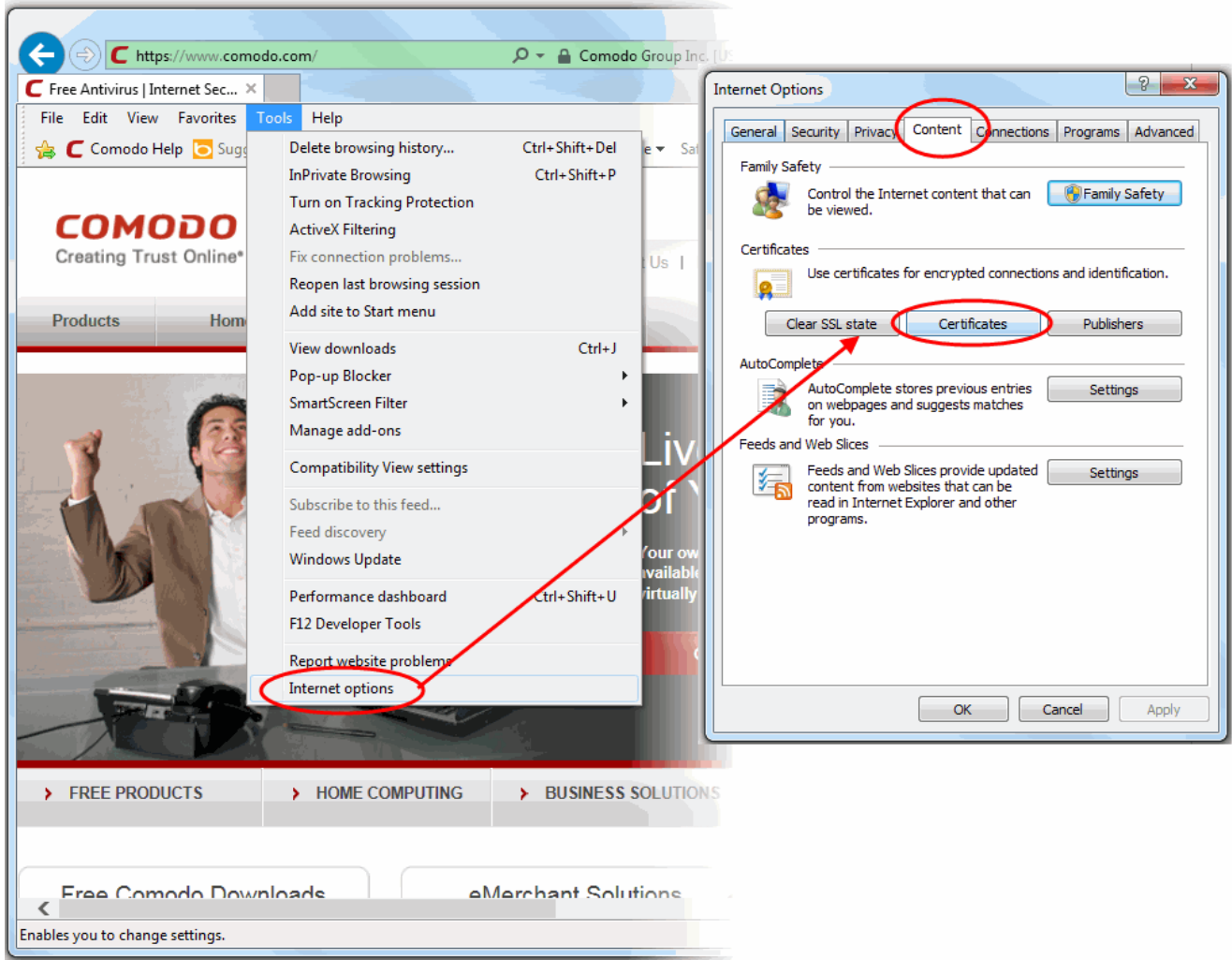
This document explains how you can use Internet Explorer to import or export an existing CPAC/Email certificate.

[Exporting your certificate from Internet Explorer](#)

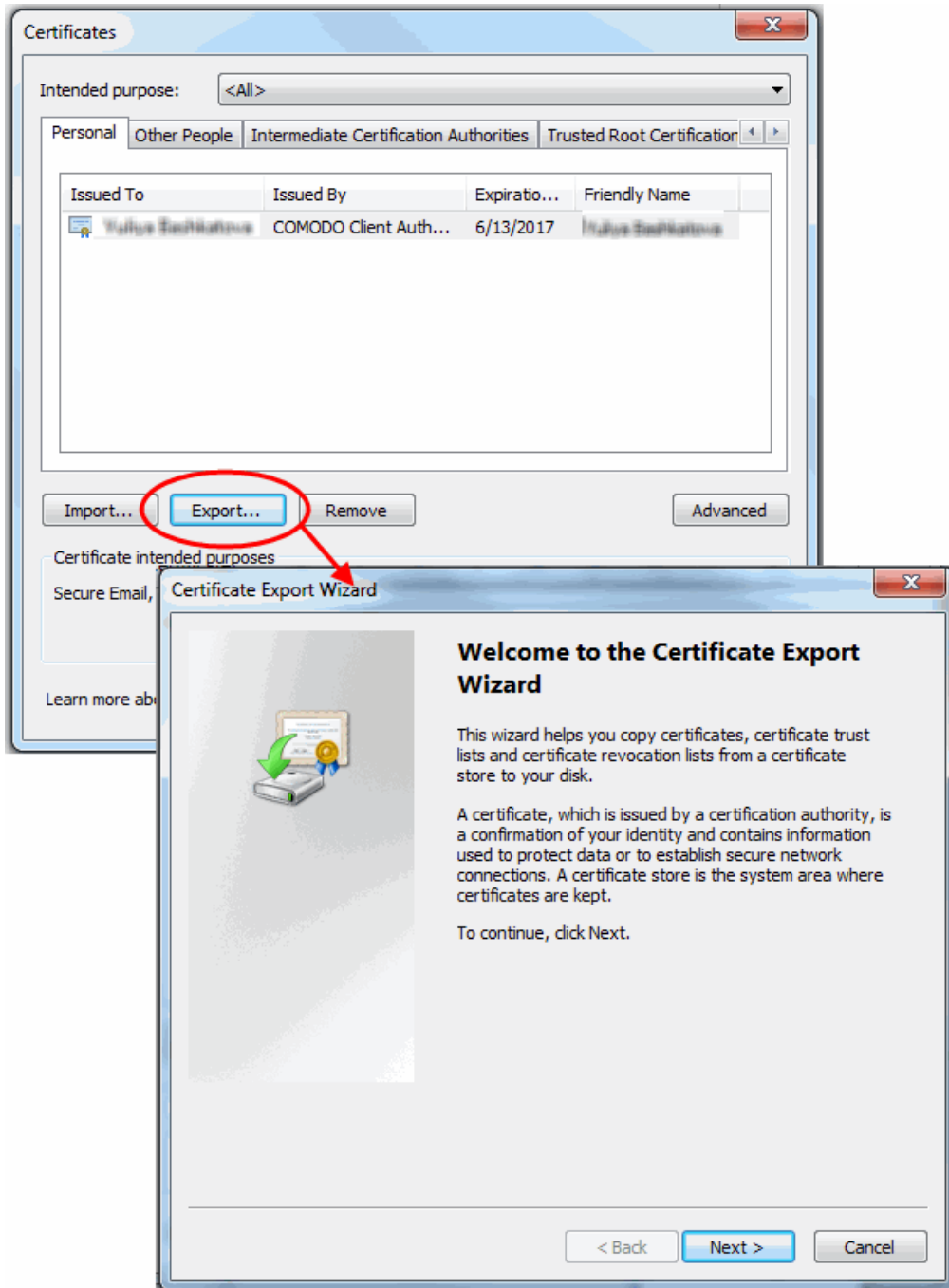
[Import your certificate into Internet Explorer](#)

### **Exporting your Certificate from Internet Explorer**

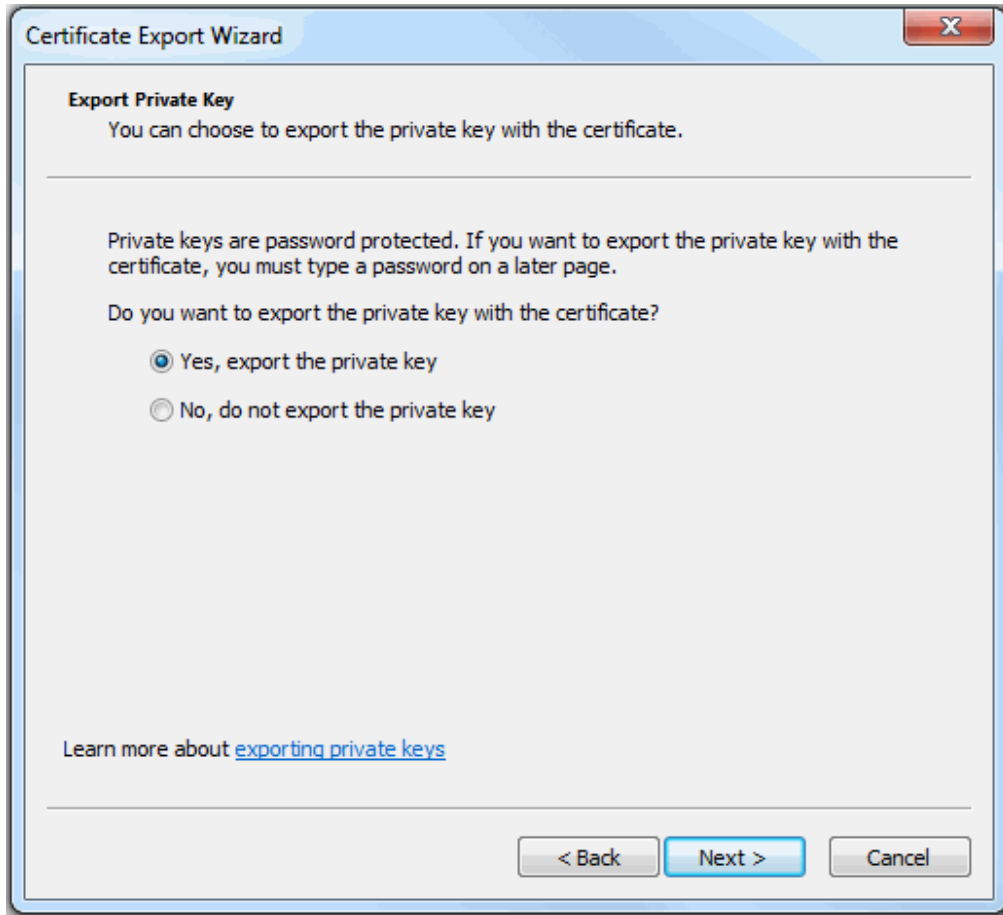
1. Open Internet Explorer then click **'Tools' > 'Internet Options'**.
2. Select the **'Content'** tab and then click the **'Certificates'** button.



3. In the Certificates interface, make sure the '**Personal**' tab is selected.
4. Choose the certificate you wish to export from the list and click '**Export...**'.



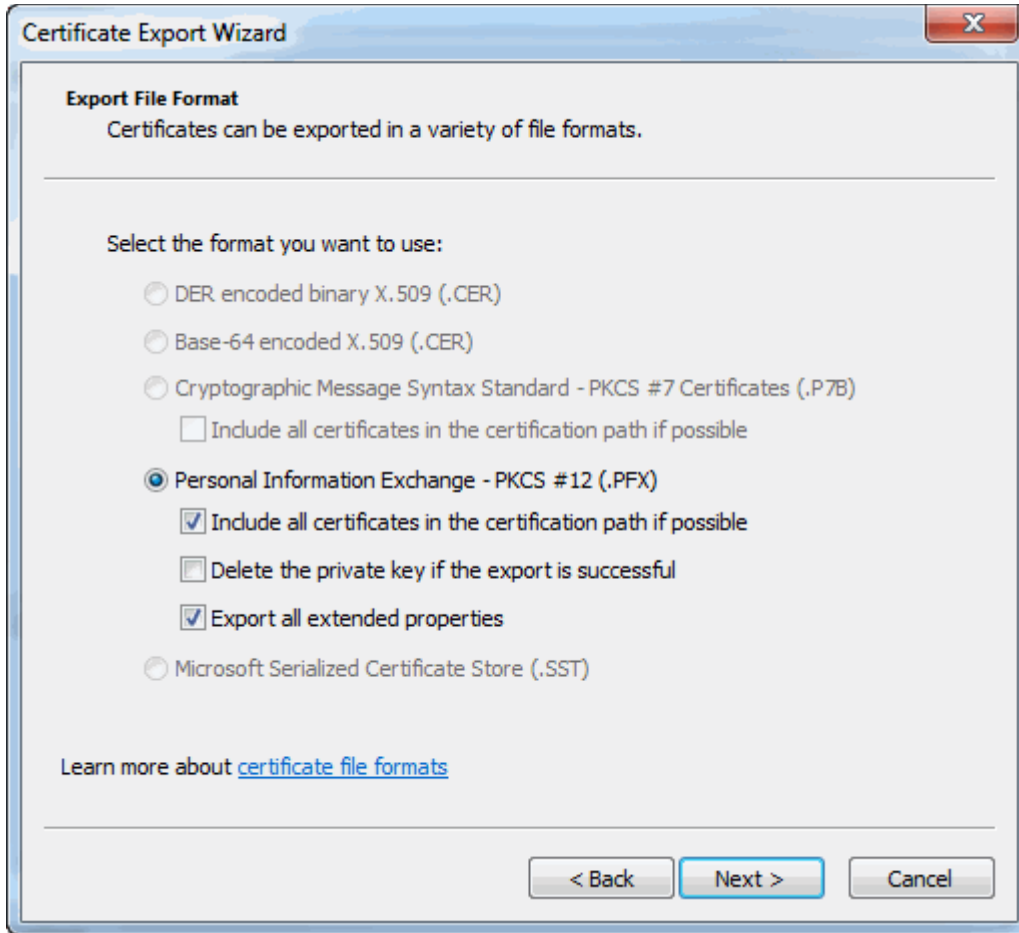
5. In the Certificate Export Wizard, click '**Next**'.



- You must export the private key if you wish to use the certificate for digitally signing mail/documents and/or for authenticating yourself to websites. So if you intend to import your certificate into another browser/email client or mobile device, then we advise you choose, '[Yes, export the private key](#)'.
- If you only need to export the certificate for the (more limited) purposes of sharing or archiving your public key, then select "[No, do not export the private key](#)'.

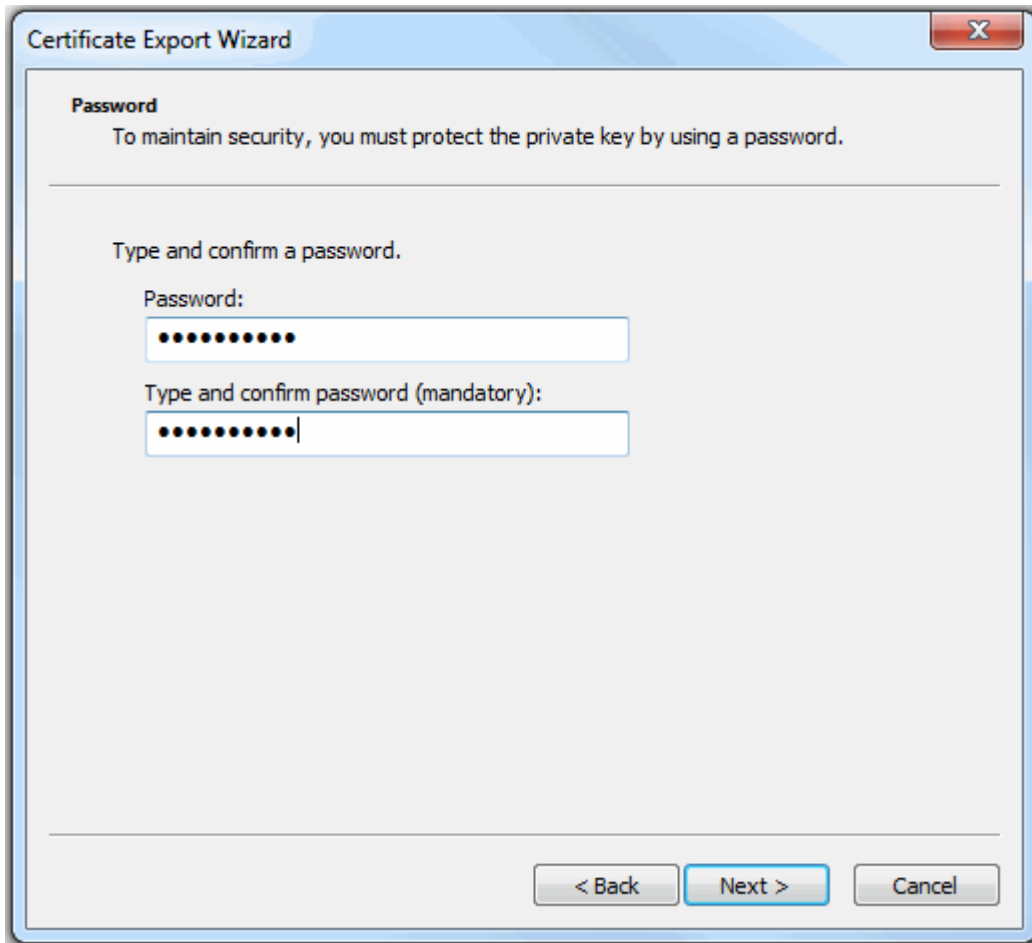
Option 1 (export with private key)

6. Select '**Yes, export the private key**' and click '**Next**'



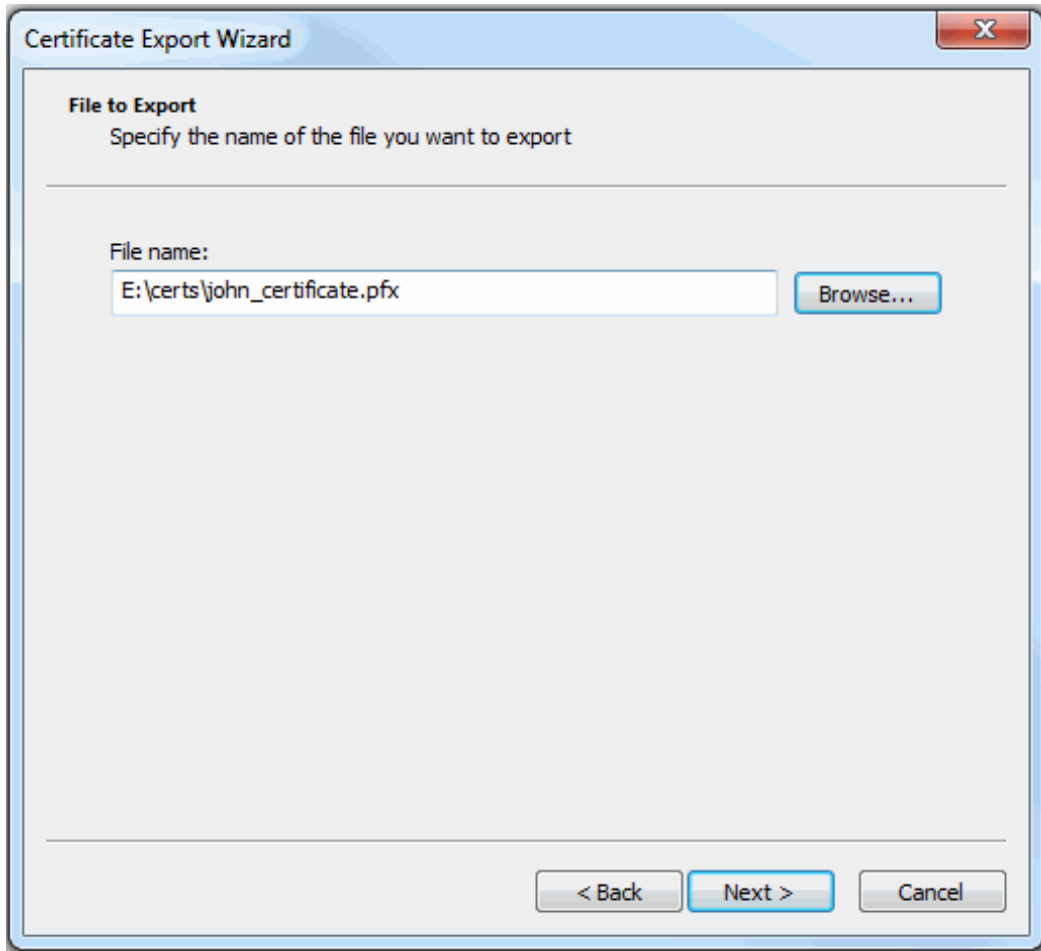
7. Select 'Personal Information Exchange' and make sure 'Include all certificates in the certification path if possible' is selected. Click **Next** to proceed.

8. Next, create a password to protect the PKCS12. This will be requested should you later import the certificate into another browser/mail client or device.

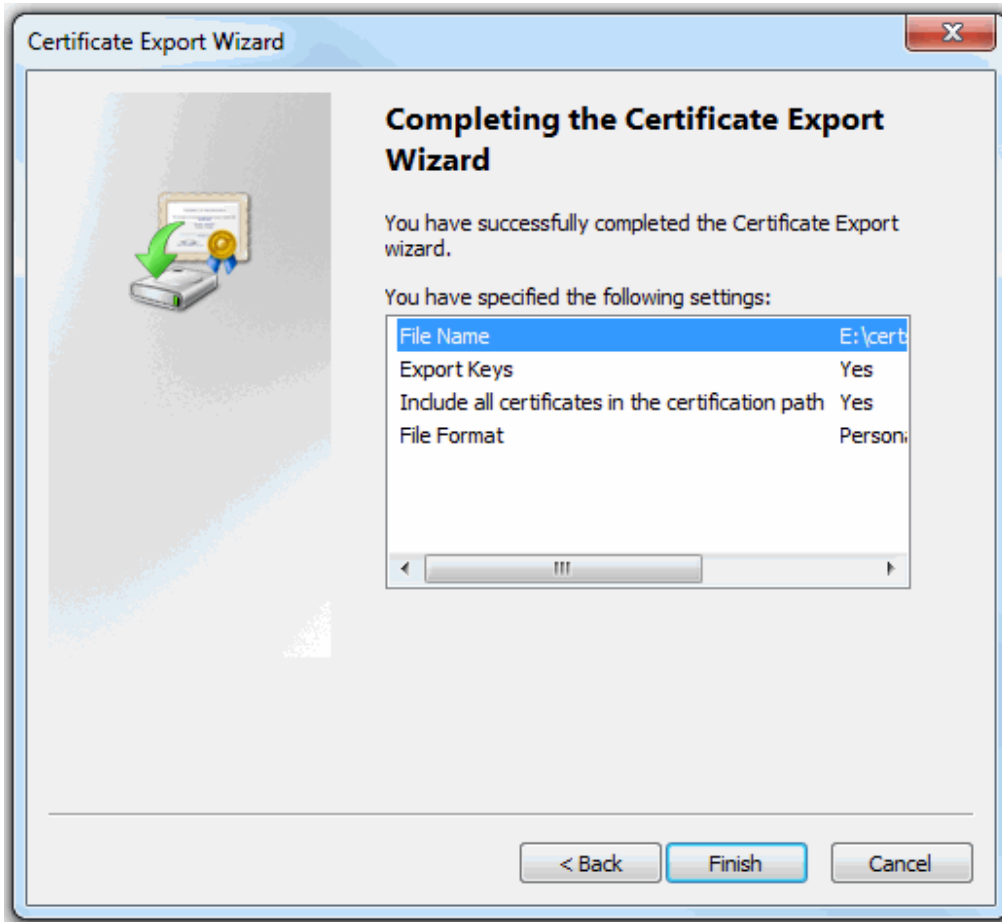


The image shows a 'Certificate Export Wizard' dialog box. The title bar reads 'Certificate Export Wizard' and has a close button (X) in the top right corner. The main content area is titled 'Password' and contains the following text: 'To maintain security, you must protect the private key by using a password.' Below this, it says 'Type and confirm a password.' There are two input fields: the first is labeled 'Password:' and contains ten black dots; the second is labeled 'Type and confirm password (mandatory):' and also contains ten black dots with a cursor at the end. At the bottom of the dialog, there are three buttons: '< Back', 'Next >', and 'Cancel'. The 'Next >' button is highlighted with a blue border.

9. Your certificate will be exported to a PKCS12 file. Click '**Browse**' and navigate to the location where the certificate should be saved and click '**Next**'.



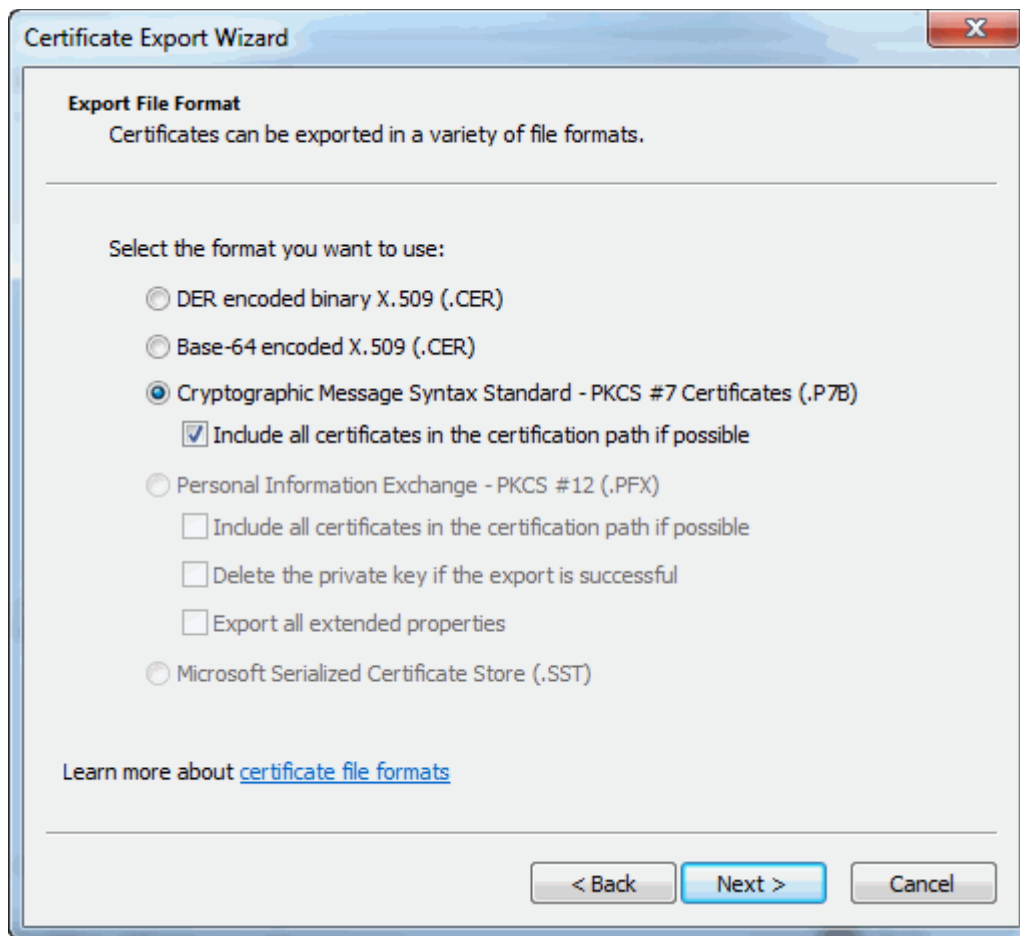
10. Review the export settings then click 'Finish' to complete the export.



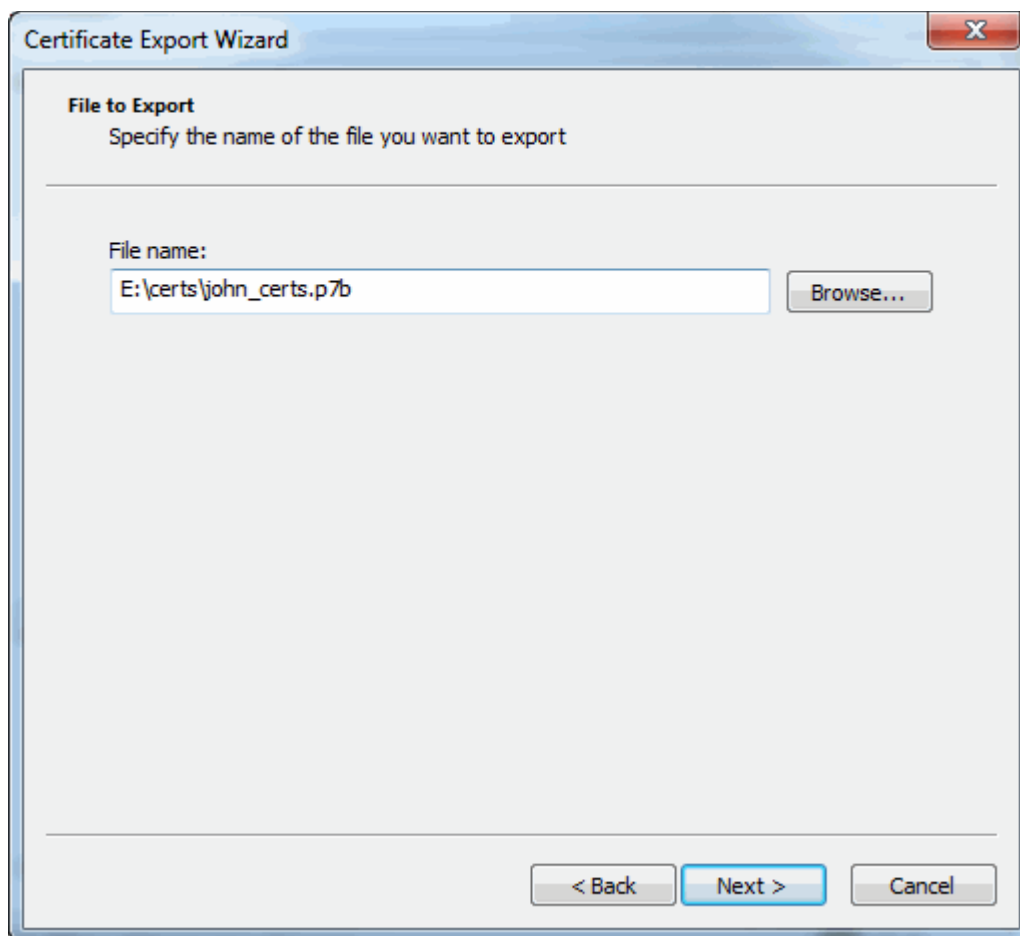
Option 2 (export without private key)

6. Select 'No, do not export the private key' and click 'Next'

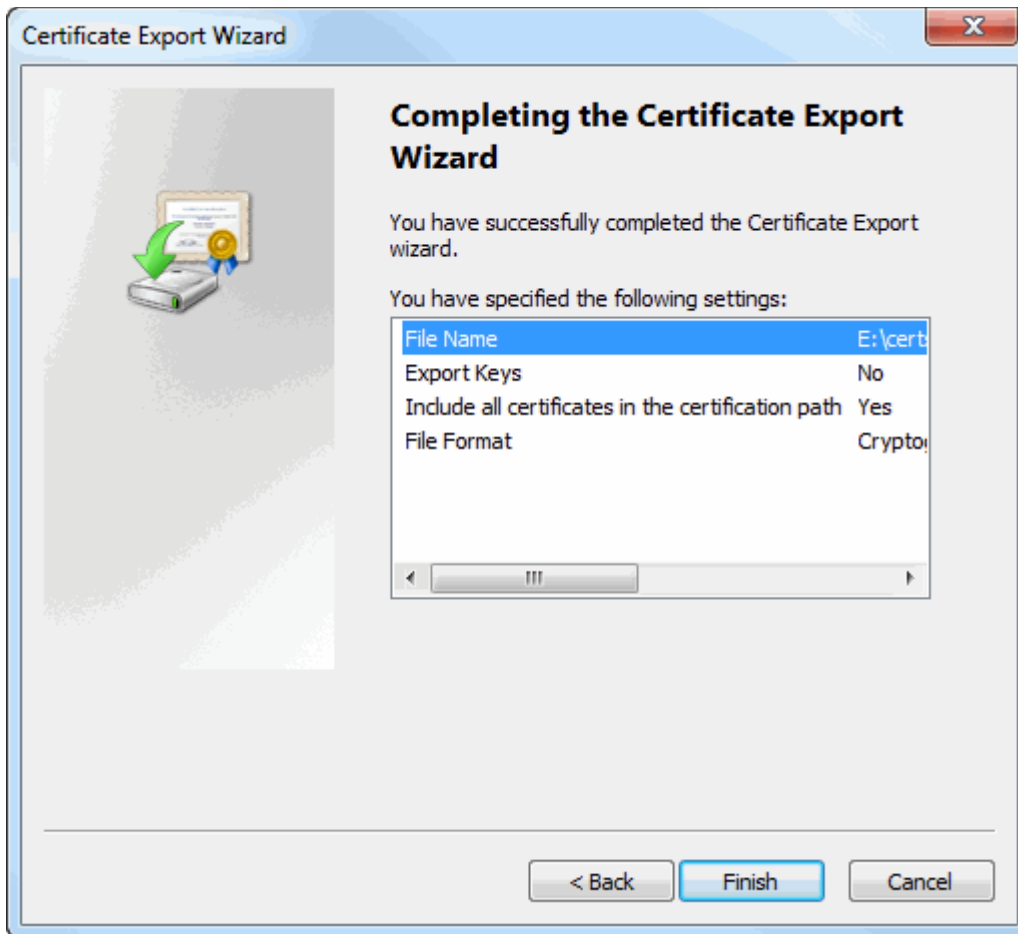




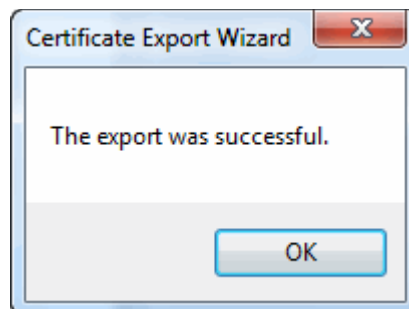
7. Select 'Cryptographic Message Syntax Standard' and make sure 'Include all certificates in the certification path if possible' is selected. Click '**Next**' to proceed.



8. Click '**Browse**' and navigate to the location where the certificate should be saved and click '**Next**'.



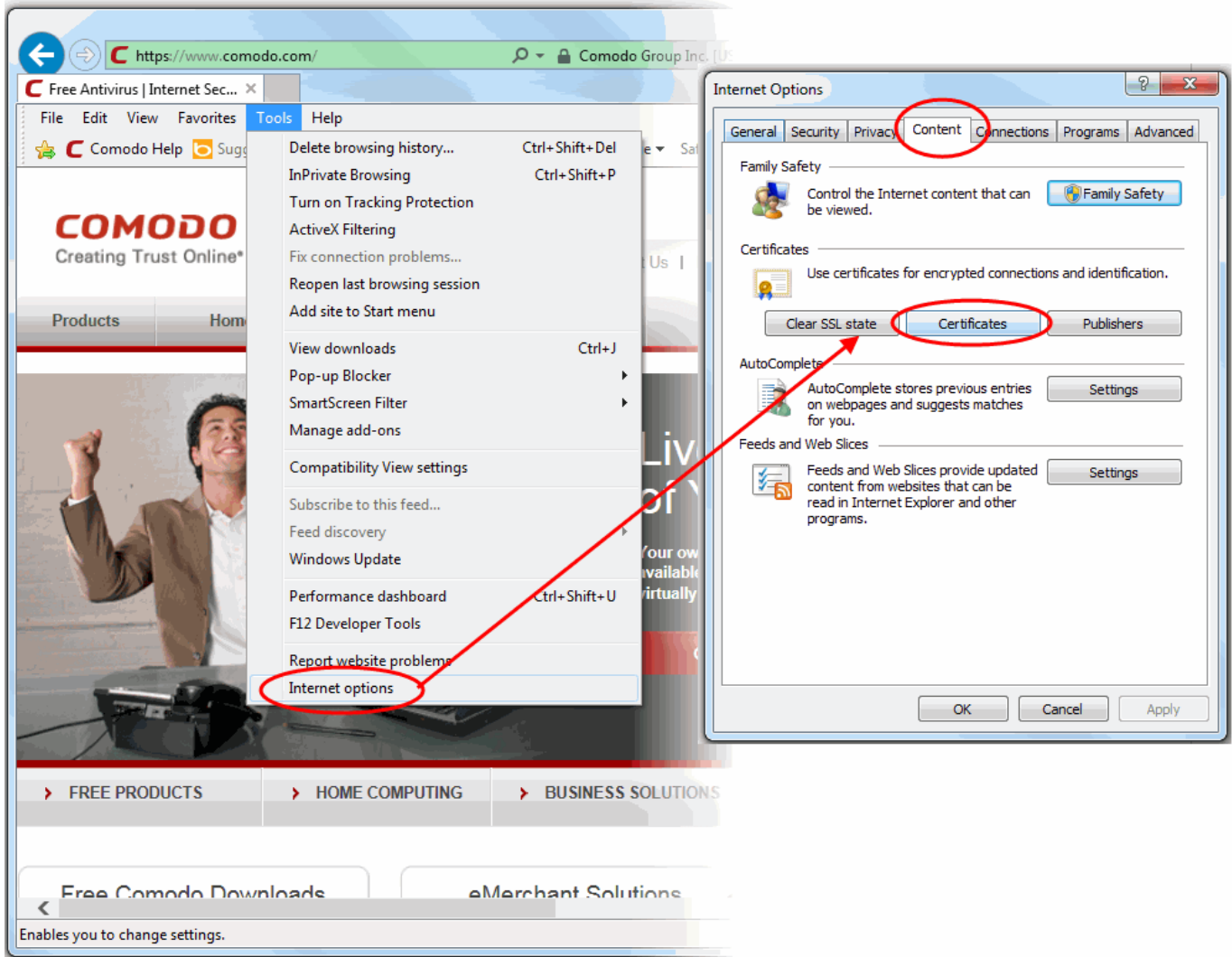
9. Click **'Finish'**.



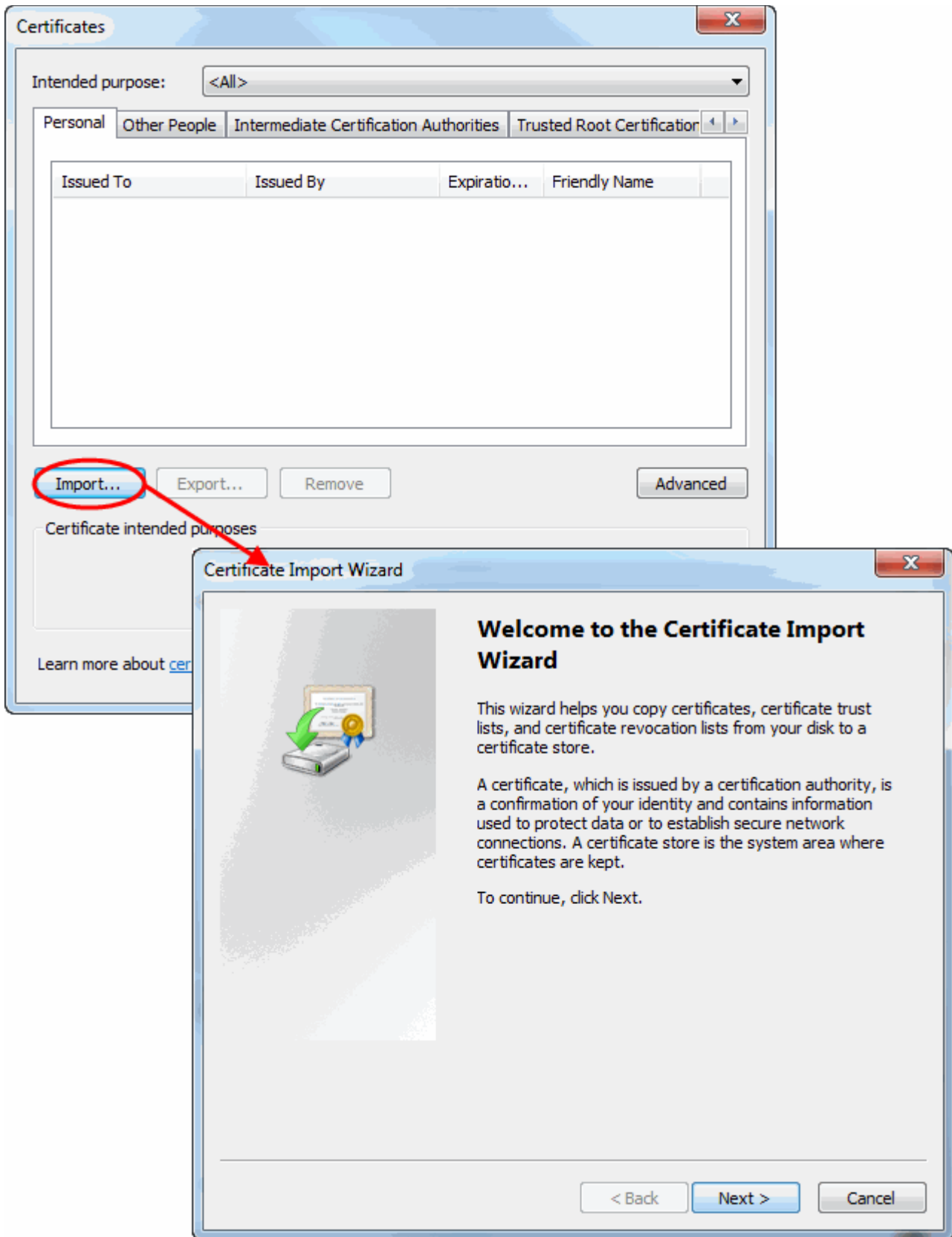
That's it. You have successfully exported your Comodo Personal Authentication certificate from Internet Explorer.

### **Importing your Certificate into Internet Explorer:**

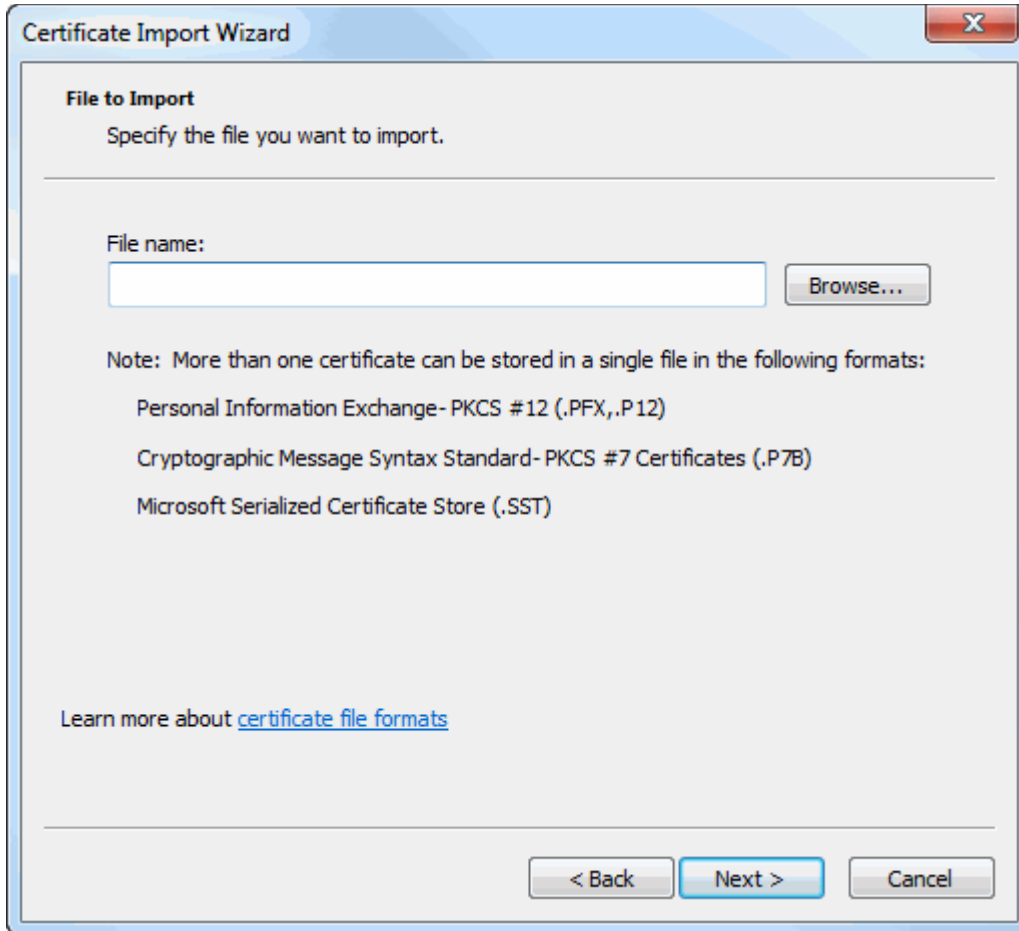
1. Open Internet Explorer and click **'Tools' > 'Internet Options'**.
2. Select the **'Content'** tab and then click the **'Certificates'** button.



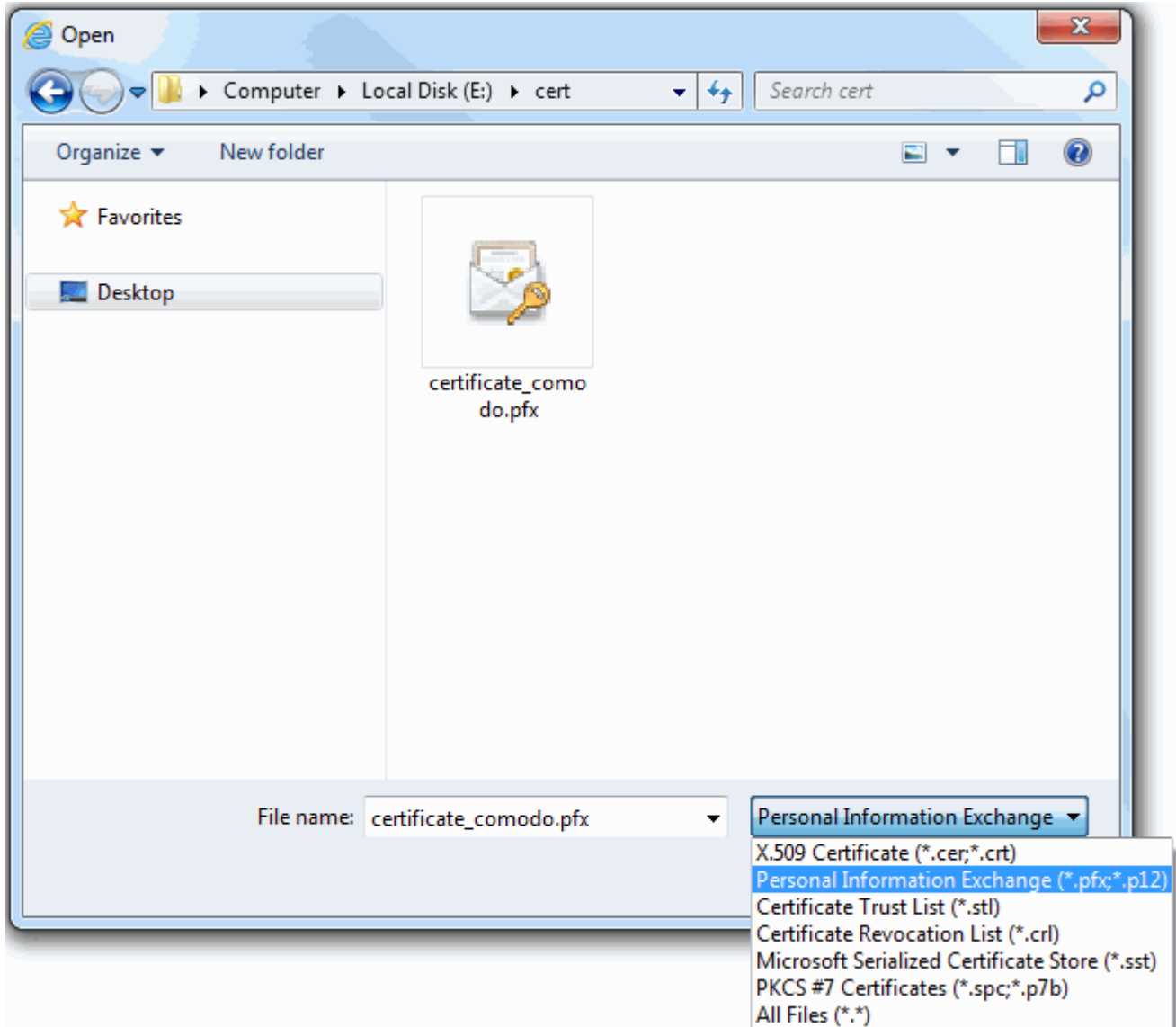
3. In the Certificates interface, make sure the 'Personal' tab is selected, click 'Import' and then click 'Next'.



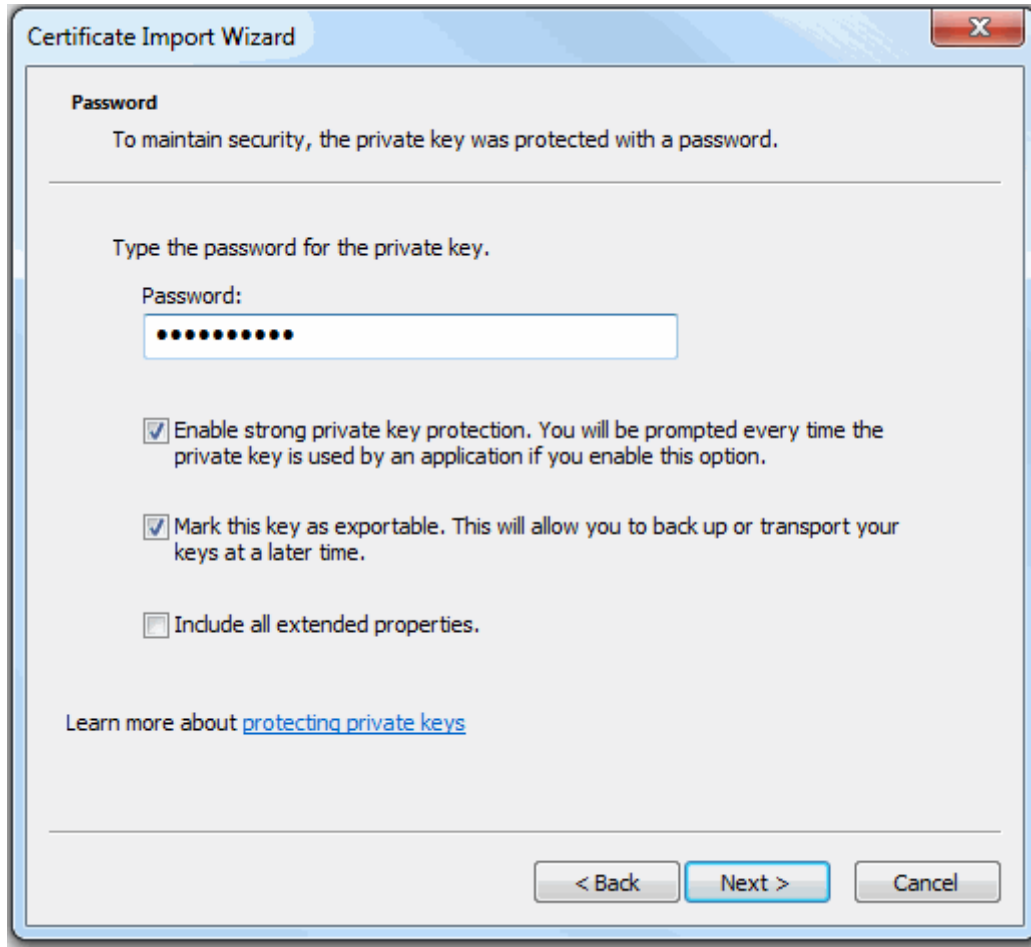
4. Click '**Browse**' in the next step and navigate to the location of your PKCS12 certificate file.



5. Locate your certificate file and click '**Open**':

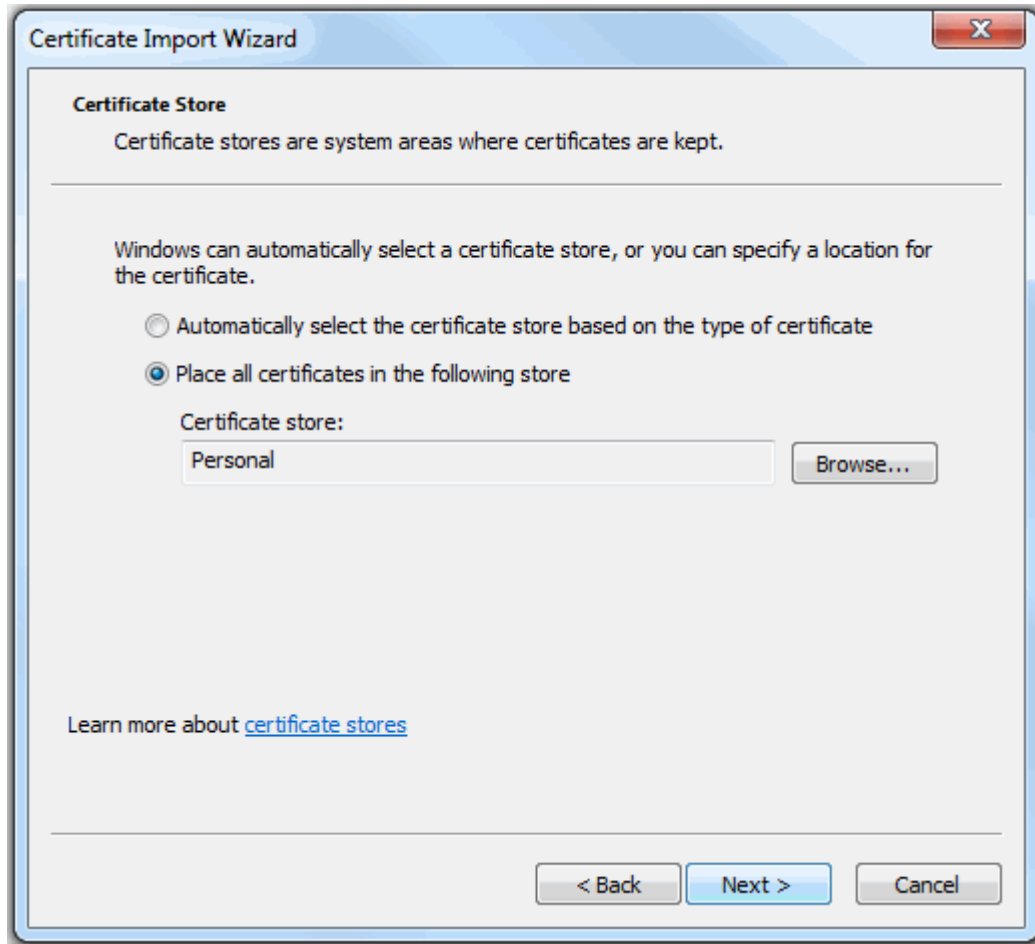


6. After locating your certificate file, click **Next**. To complete the installation process, you are required to enter the PIN (password) you set up for the certificate during the enrollment process. If you have forgotten your password, contact your system administrator who will be able to reset it for you.

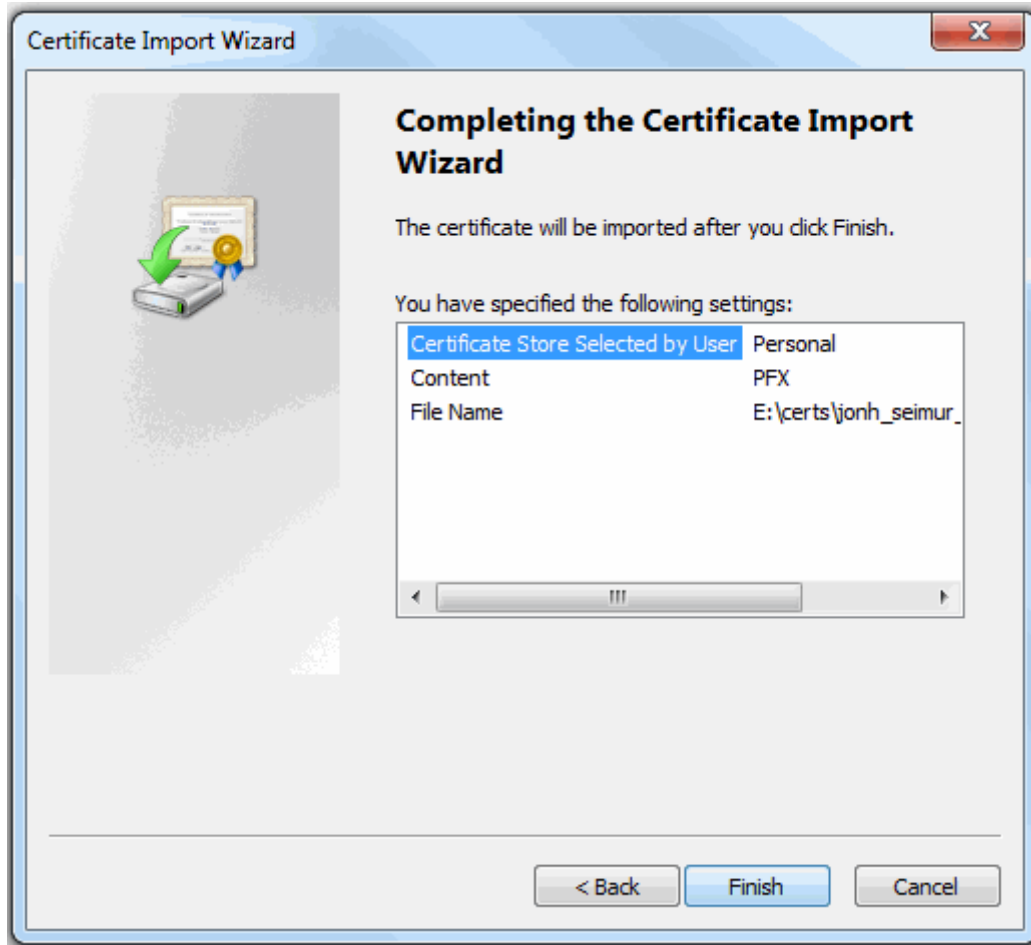


7. Click **Next**. You will be prompted to choose the certificate store for your certificate. Unless your administrator has specified otherwise, you should leave this at the default **Place all certificates in the following store** option.





8. Click '**Next**' to proceed to the review and confirm stage:



9. Click **Finish** to complete the process. The certificate will be imported.
10. Select the security level for storing the Private Key in your system and click **OK**.



That's it. You have successfully imported your Comodo Personal Authentication certificate into Internet Explorer.

# About Comodo

The Comodo organization is a global innovator and developer of cyber security solutions, founded on the belief that every single digital transaction deserves and requires a unique layer of trust and security. Building on its deep history in SSL certificates, [antivirus](#) and endpoint security leadership, and true containment technology, individuals and enterprises rely on Comodo's proven solutions to authenticate, validate and secure their most critical information.

With data protection covering endpoint, network and mobile security, plus identity and access management, Comodo's proprietary technologies help solve the malware and cyber-attack challenges of today. Securing online transactions for thousands of businesses, and with more than 85 million desktop security software installations, Comodo is Creating Trust Online®. With United States headquarters in Clifton, New Jersey, the Comodo organization has offices in China, India, the Philippines, Romania, Turkey, Ukraine and the United Kingdom.

**Comodo Security Solutions, Inc.**

1255 Broad Street

Clifton, New Jersey 07013

United States

Tel : +1.888.266.6361

Tel : +1.703.581.9361

Email: [sales@Comodo.com](mailto:sales@Comodo.com)**Comodo CA Limited**

3rd floor, Office Village Exchange Quay

Trafford Road, Salford, Manchester M5 3EQ

United Kingdom

Tel : +44 (0) 161 874 7070

Fax : +44 (0) 161 877 1767

For additional information on Comodo - visit <https://www.comodo.com>