

Importing and exporting your Email or Personal Authentication certificate using Comodo IceDragon

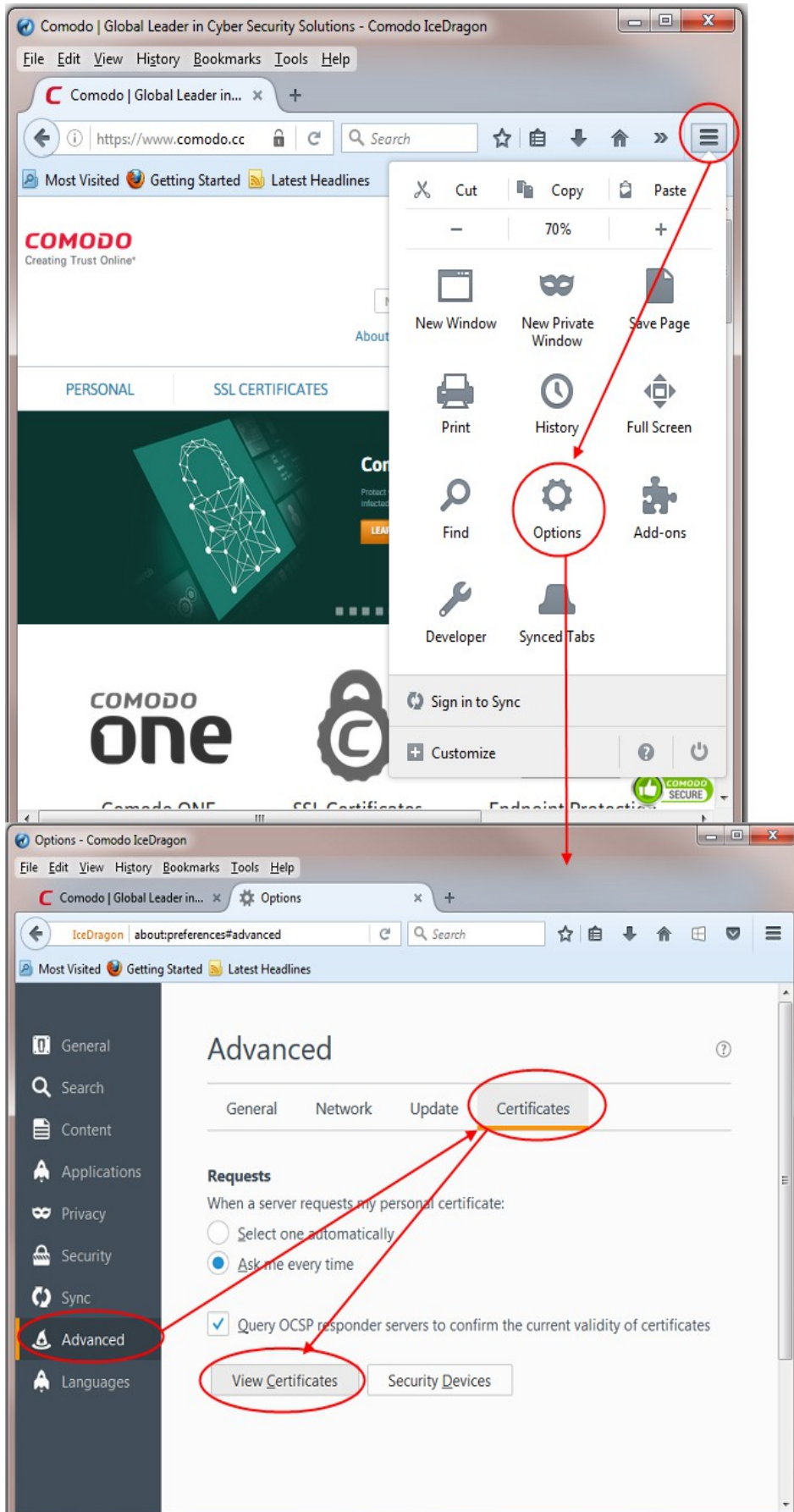
This document explains how you can use Comodo IceDragon to import or export an existing CPAC/Email certificate.

[Exporting your certificate from Comodo IceDragon](#)

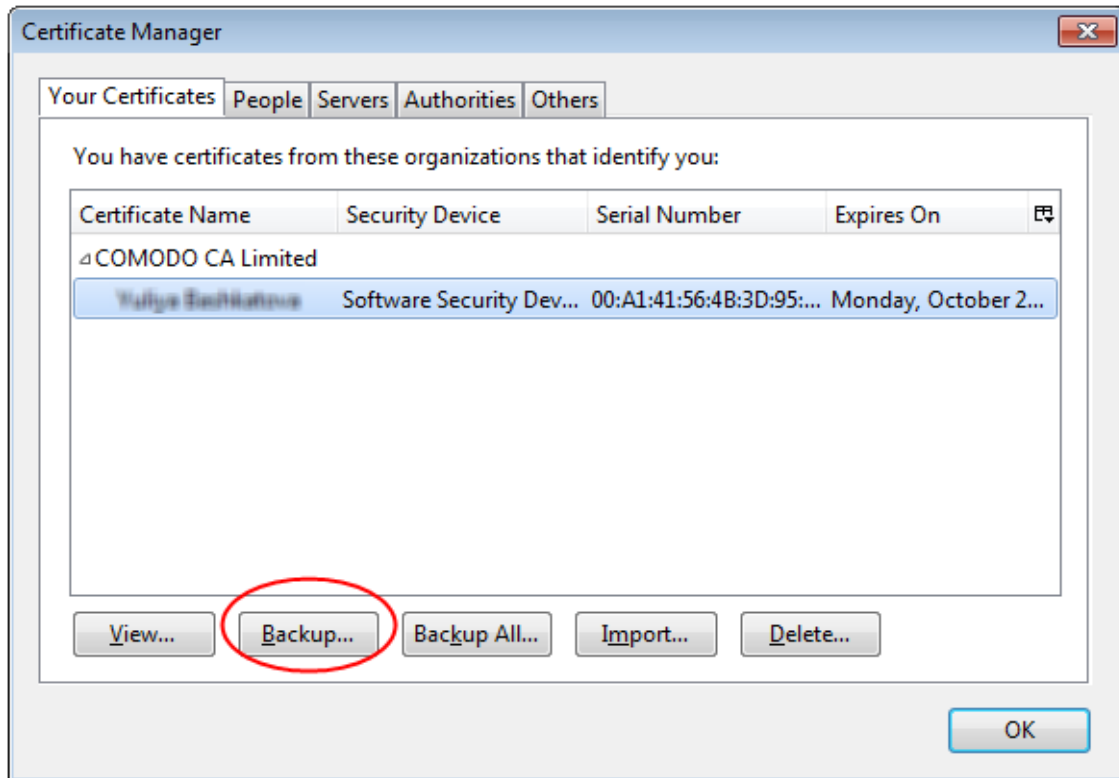
[Import your certificate into Comodo IceDragon](#)

Exporting your Certificate from IceDragon

1. Click the hamburger/'Open Menu' button at the top-right corner then select '**Options**'
2. Select '**Advanced**' from the menu on the left



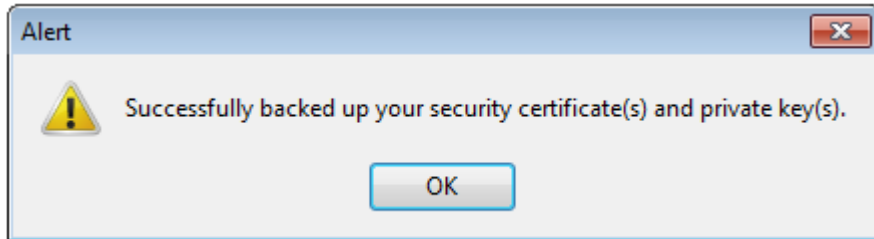
3. On the **'Certificates'** tab, click the **'View Certificates'** button
4. On the **'Your Certificates'** tab (of the 'Certificate Manager' dialog box), select the certificate you wish to back up and click **'Backup'**



5. Your certificate will be exported to a PKCS12 file. Please create a name for this file and choose where you want to save it.
6. Next, create a password to protect the PKCS12. This password will be requested should you later import the certificate into another browser/mail client or device.



7. Click **'OK'** to finalize and that's it! You have successfully exported your Comodo Personal Authentication certificate.

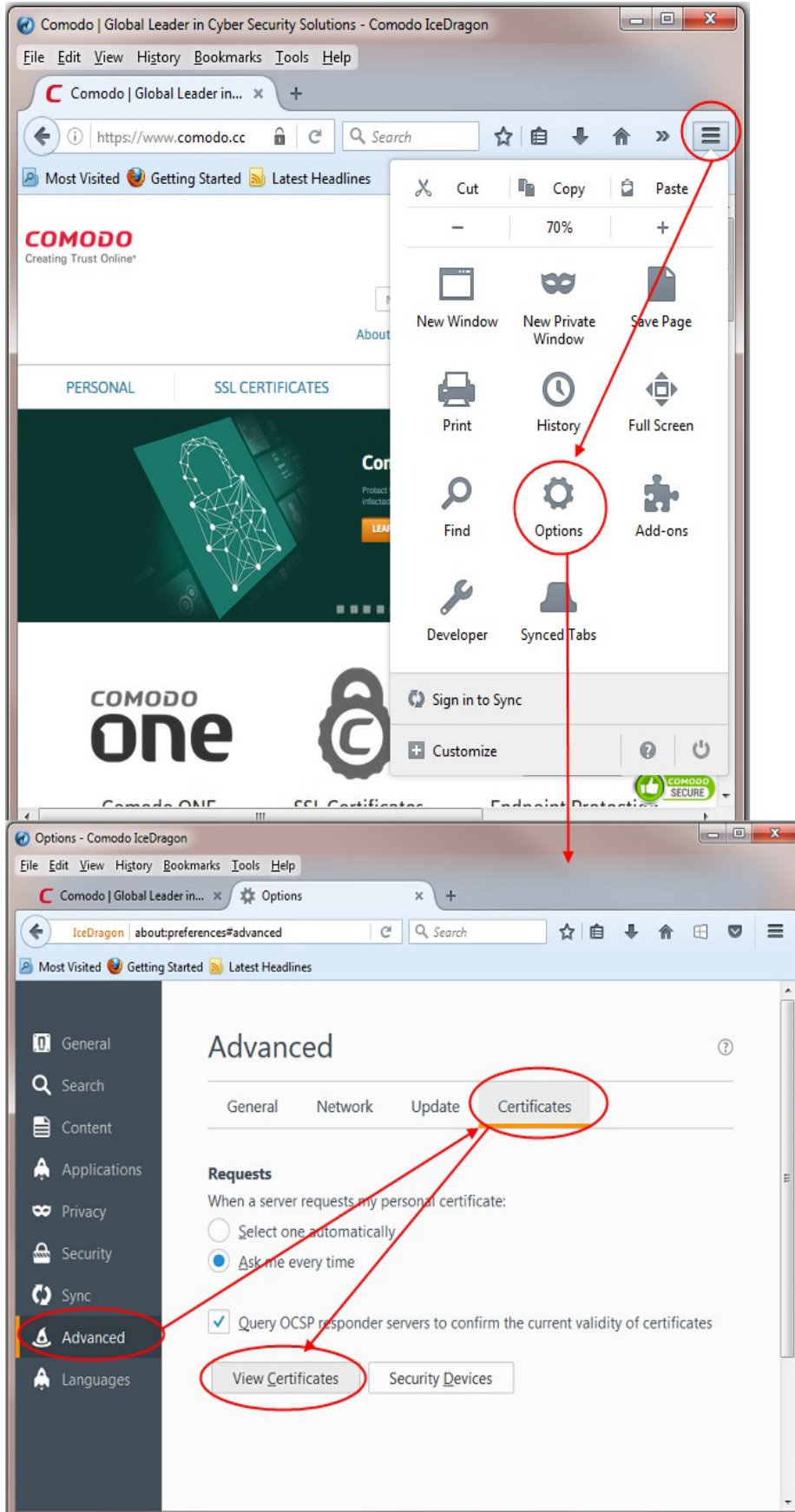


Importing your Certificate into Comodo IceDragon:

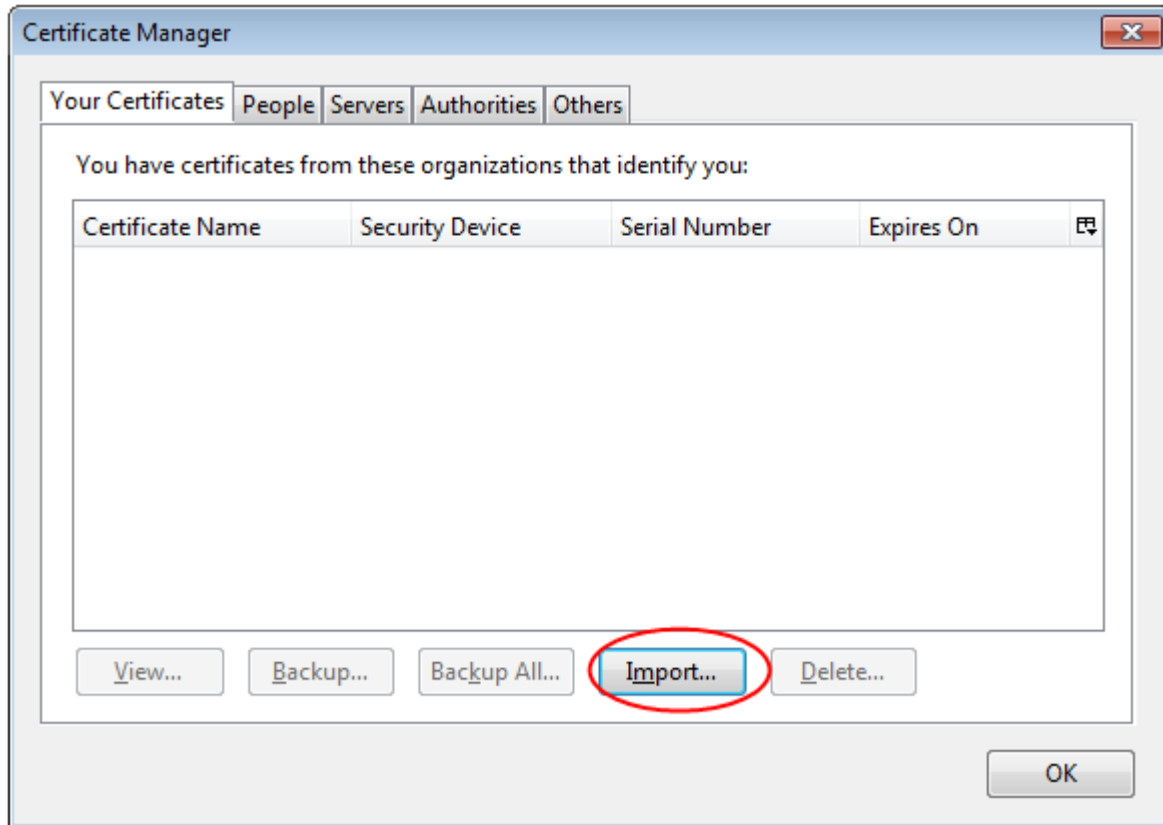
1. Click the hamburger/'Open Menu' button at the top-right corner then select **'Options'**
2. Select **'Advanced'** from the menu on the left

Optional - Leave enabled **'Ask me every time'** under **'When a server requests my personal certificate'**.

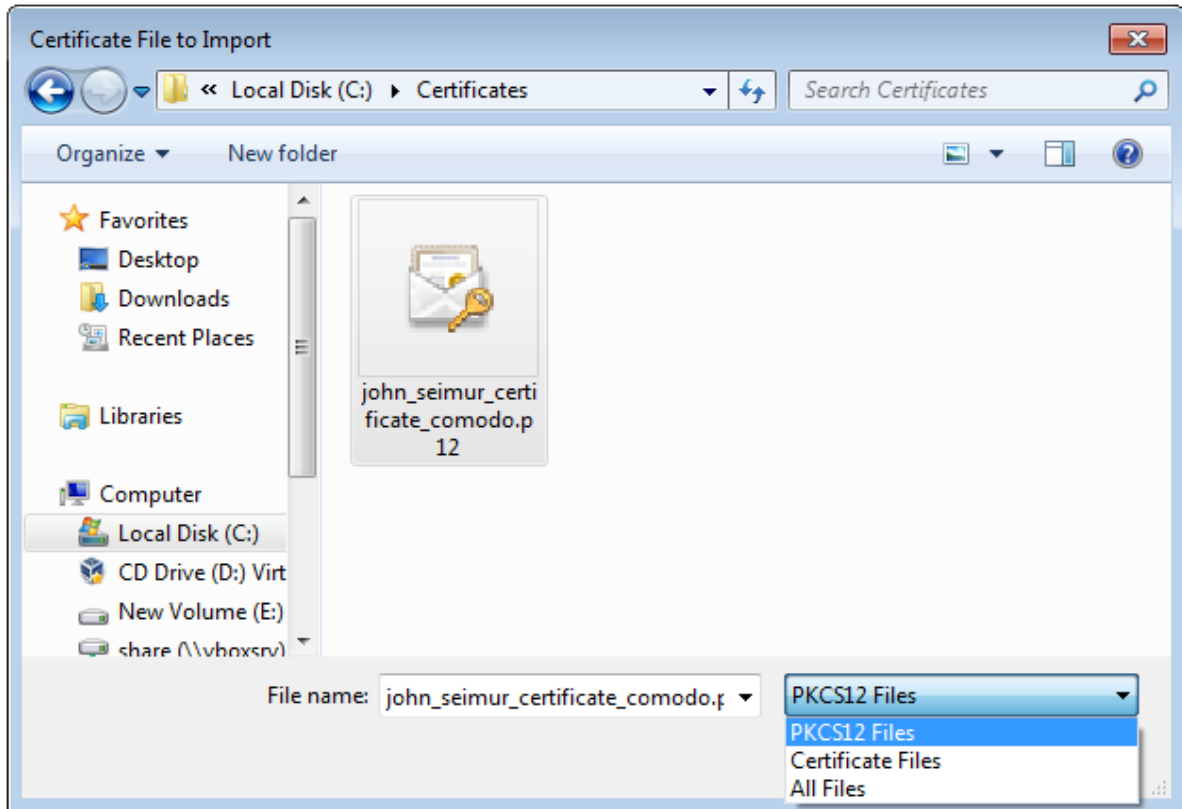
Doing so alerts you to the fact that a server has requested identity confirmation and enables you to select your Comodo Personal Authentication Certificate.



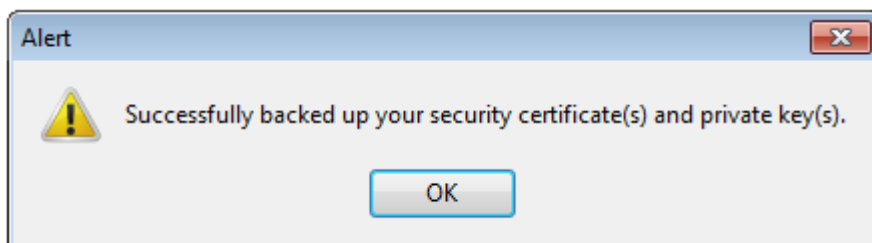
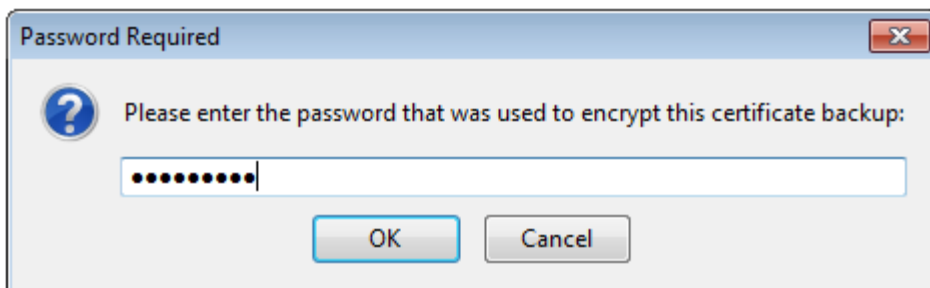
3. On the '**Certificates**' tab, click the '**View Certificates**' button
4. On the '**Your Certificates**' tab (of the 'Certificate Manager' dialog box), select the certificate you wish to back up and click '**Import**'



5. Navigate to the location of your PKCS12 certificate file, select your Comodo Personal Authentication Certificate and click '**Open**'.



6. To complete the import process, you are required to enter the password you set up while exporting or backing up your certificate. Enter the password and click **OK**.



That's it. You have successfully imported your Comodo Personal Authentication certificate into Comodo IceDragon.

About Comodo

The Comodo organization is a global innovator and developer of cyber security solutions, founded on the belief that every single digital transaction deserves and requires a unique layer of trust and security. Building on its deep history in SSL certificates, antivirus and endpoint security leadership, and true containment technology, individuals and enterprises rely on Comodo's proven solutions to authenticate, validate and secure their most critical information.

With data protection covering endpoint, network and mobile security, plus identity and access management, Comodo's proprietary technologies help solve the malware and cyber-attack challenges of today. Securing online transactions for thousands of businesses, and with more than 85 million desktop security software installations, Comodo is Creating Trust Online®. With United States headquarters in Clifton, New Jersey, the Comodo organization has offices in China, India, the Philippines, Romania, Turkey, Ukraine and the United Kingdom.

Comodo Security Solutions, Inc.

1255 Broad Street

Clifton, New Jersey 07013

United States

Tel : +1.888.266.6361

Tel : +1.703.581.9361

Email: sales@Comodo.com**Comodo CA Limited**

3rd floor, Office Village Exchange Quay

Trafford Road, Salford, Manchester M5 3EQ

United Kingdom

Tel : +44 (0) 161 874 7070

Fax : +44 (0) 161 877 1767

For additional information on Comodo - visit <https://www.comodo.com>