

## Importing and Using your Email or Personal Authentication certificate with Eudora (PC)

- If you originally applied for the certificate on the same computer as your Eudora installation then it should already be installed. You can skip straight to '[Signing and Encrypting](#)'.
- If your certificate is not already installed on the computer you are using, then please export it from the machine on which it resides using one of the browsers listed on the CPAC main page. You then need to transfer it to this computer (email it to yourself or save the certificate file to USB then copy over). You can then follow the '[import](#)' instructions in this document.

[Importing your certificate into Eudora](#)

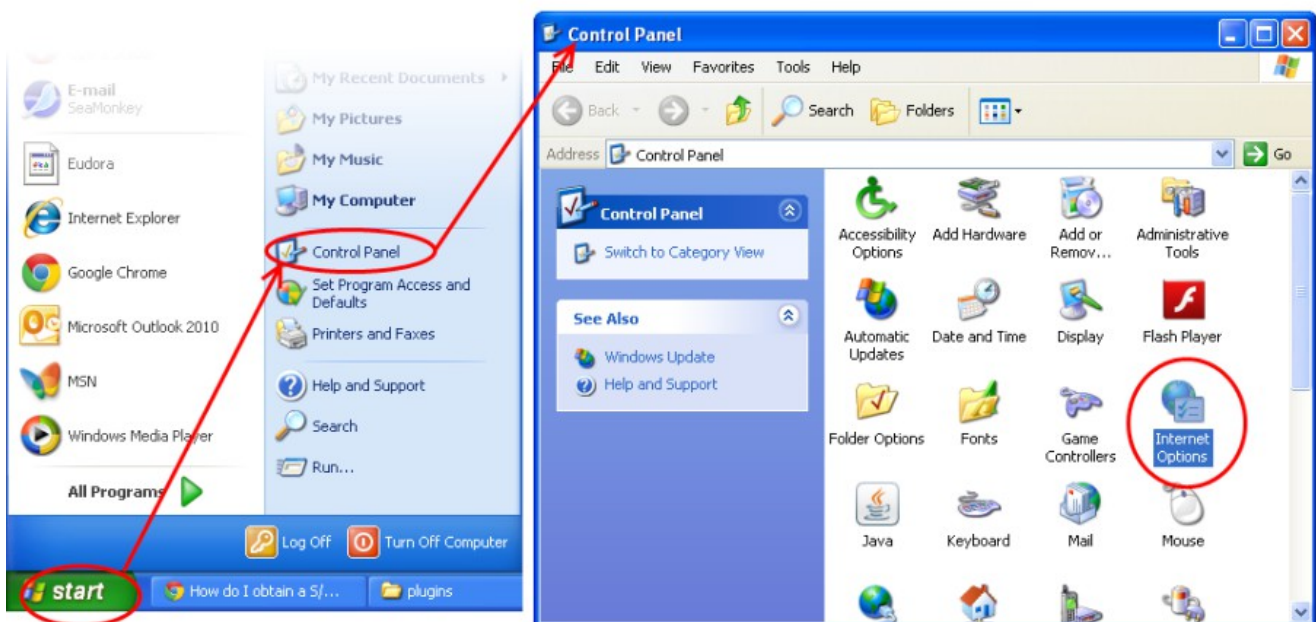
[Signing and Encrypting mails](#)

### Importing your Certificate into Eudora:

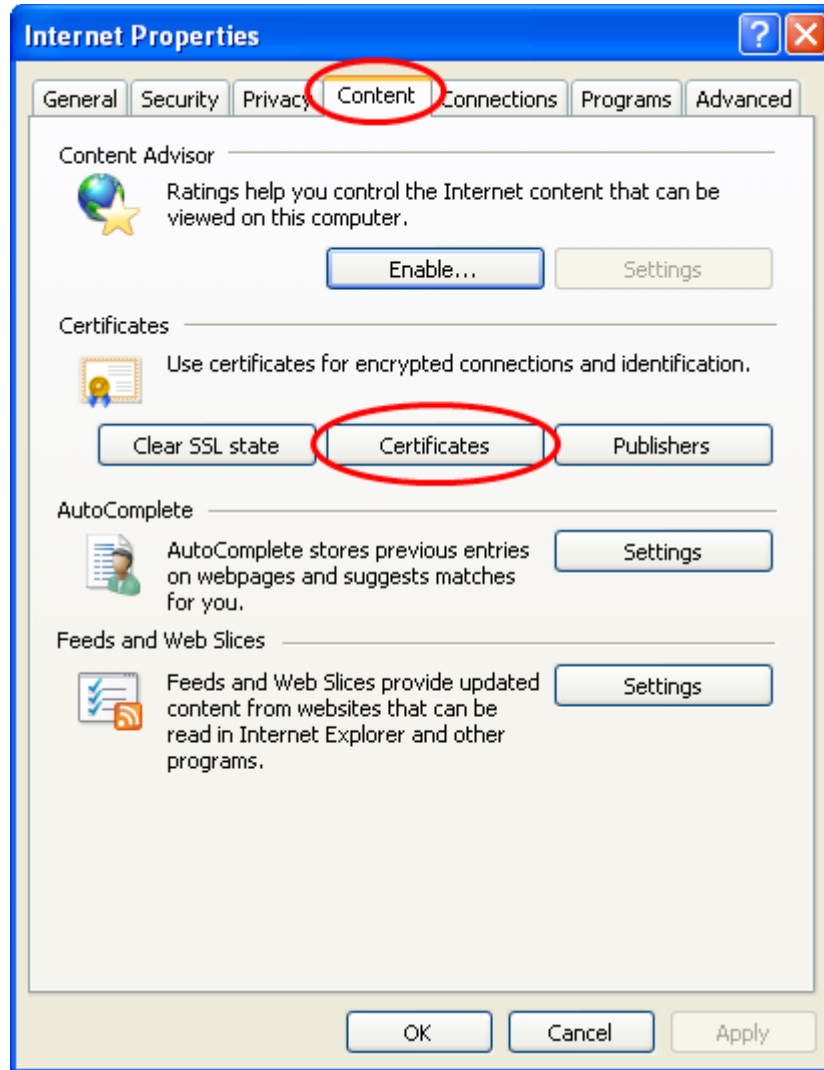
The Eudora mail client itself does not manage personal authentication certificates but uses the Windows certificate store instead.

To import your certificate into Windows:

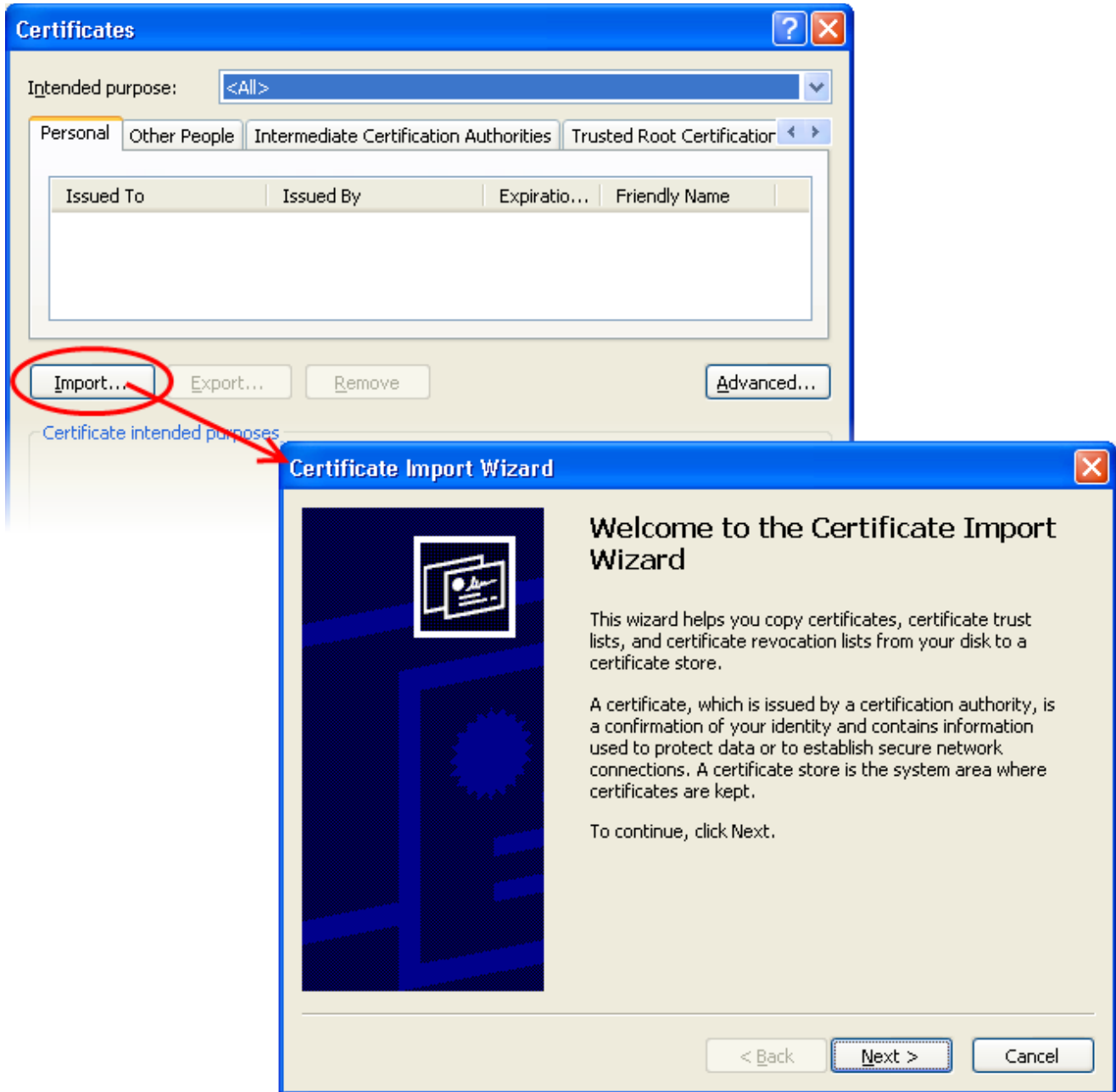
1. Click **Start > Control Panel > Internet Options**



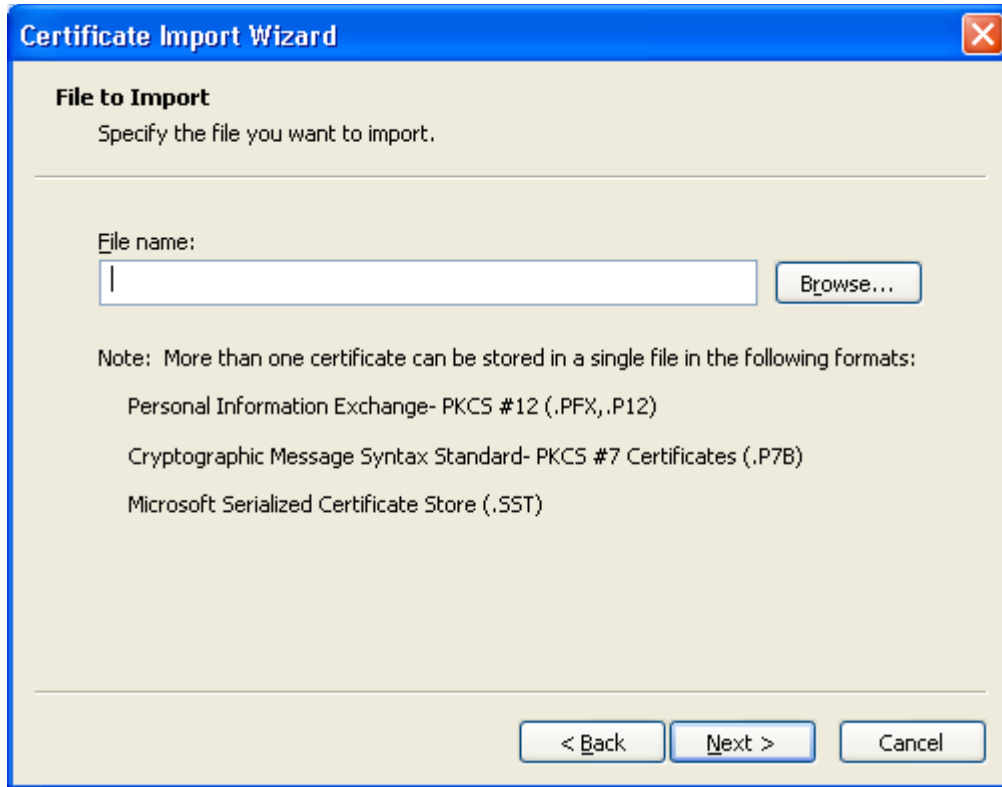
2. Select the '**Content**' tab and then click the '**Certificates**' button.



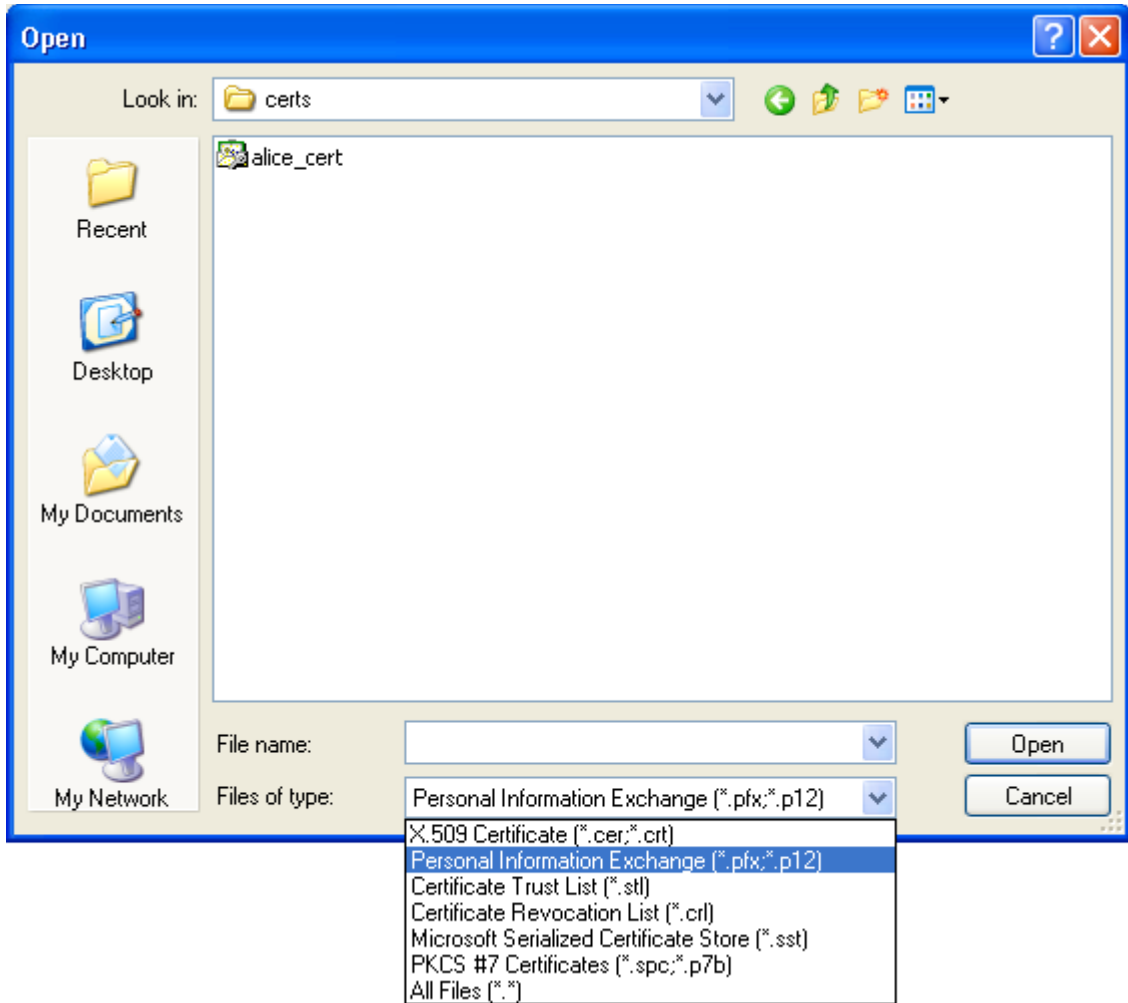
3. In the '**Certificates interface**', make sure the '**Personal**' tab is selected, click '**Import**' and then click '**Next**'.



4. Click '**Browse**' in the next step and navigate to the location of your PKCS12 certificate file.



5. Now you need to change type of the file, select '**Personal Information Exchange (.p12)**' from the drop down box, locate your certificate file (.p12) and click '**Open**' (see below).



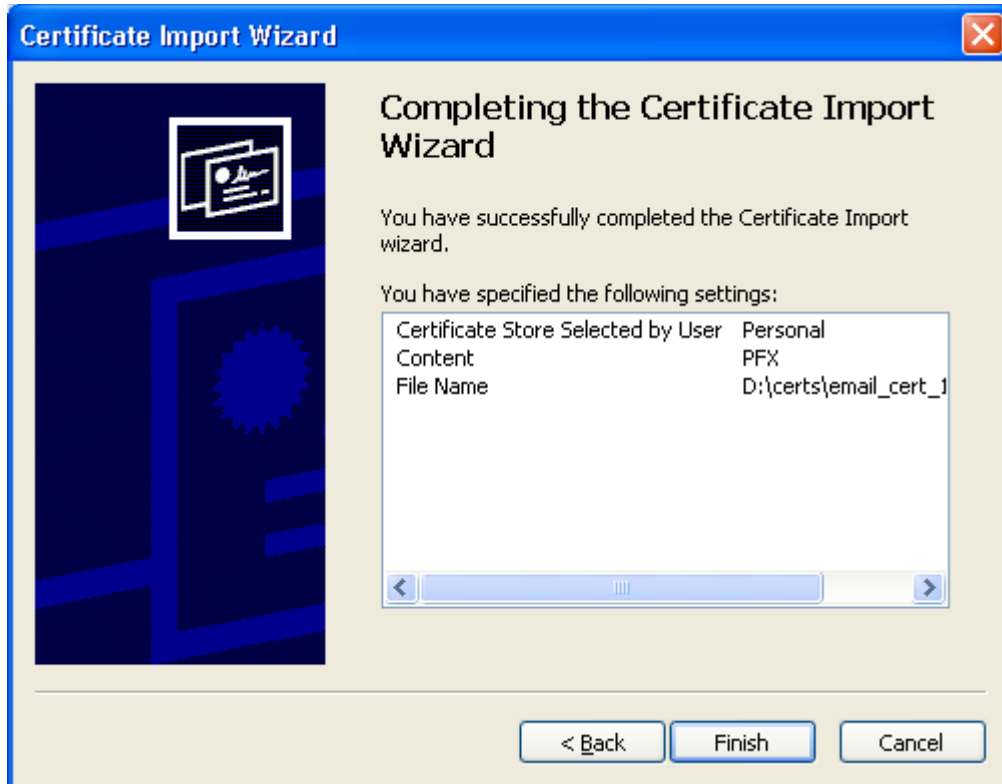
6. Click **Next**. To complete the installation process, you are required to enter the PIN (password) you set up for the certificate during the enrollment process. If you have forgotten your password, contact your system administrator who will be able to reset it for you.



7. Click **Next**. You will be prompted to choose the certificate store for your certificate. Unless your administrator has specified otherwise, you should leave this at the default **Place all certificates in the following store** option.



8. Click '**Next**' to proceed to the last step - completing the **Certificate Import Wizard**.



9. Review your settings and click **Finish** to import your certificate.

10. Select the security level for storing your private key and click **OK**.



That's it. You have successfully imported your Comodo Personal Authentication certificate into Windows. You can now sign and encrypt mails in Eudora by following the guidance in the next section.

## Signing and Encrypting Mails

- Signing an email ensures the recipient knows the email has come from you and informs them that it has not

been modified in transit.

- Encrypting an email ensures that only the recipient can read the email content and attachments.

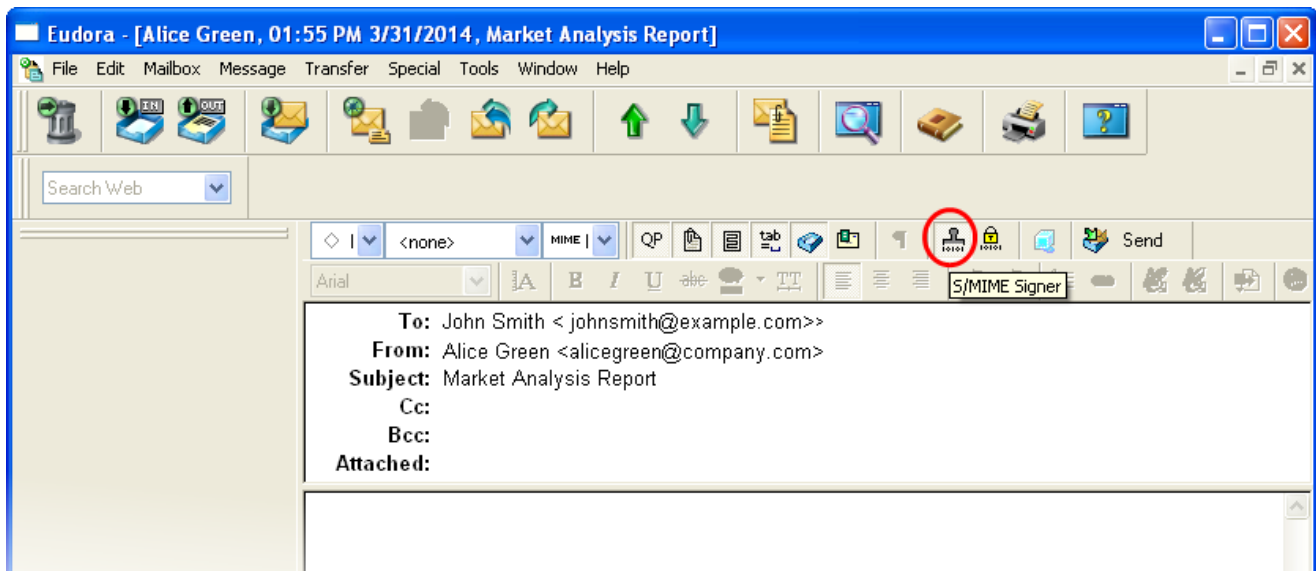
**Note 1:** In order to encrypt mail, you must first have your recipient's email certificate in your certificate store. To obtain their certificate, you need to get your contact to send you a signed email. Upon receipt of the signed mail, their certificate will be automatically imported into your certificate store and you will be able to sign/encrypt mail to that person.

**Note 2:** To sign and /or encrypt mails, the Eudora S/MIME plug-in must be installed. If it isn't already installed, download it from [www.eudora.com/download/eudora/windows/7.0/SMIME.zip](http://www.eudora.com/download/eudora/windows/7.0/SMIME.zip) and copy the SMIME.dll file to the Eudora 'Plugins' folder (typically C:\Program Files\Qualcomm\Eudora\plugins).

Restart Eudora and verify installation by selecting **Special > Message Plug-ins Settings...**

### To sign your mail:

1. Compose your email and attach files as usual.
2. Click **S/MIME Signer** from the tool bar.



3. Click **'Send'**.
4. Click **OK** in the protected item access request dialog.

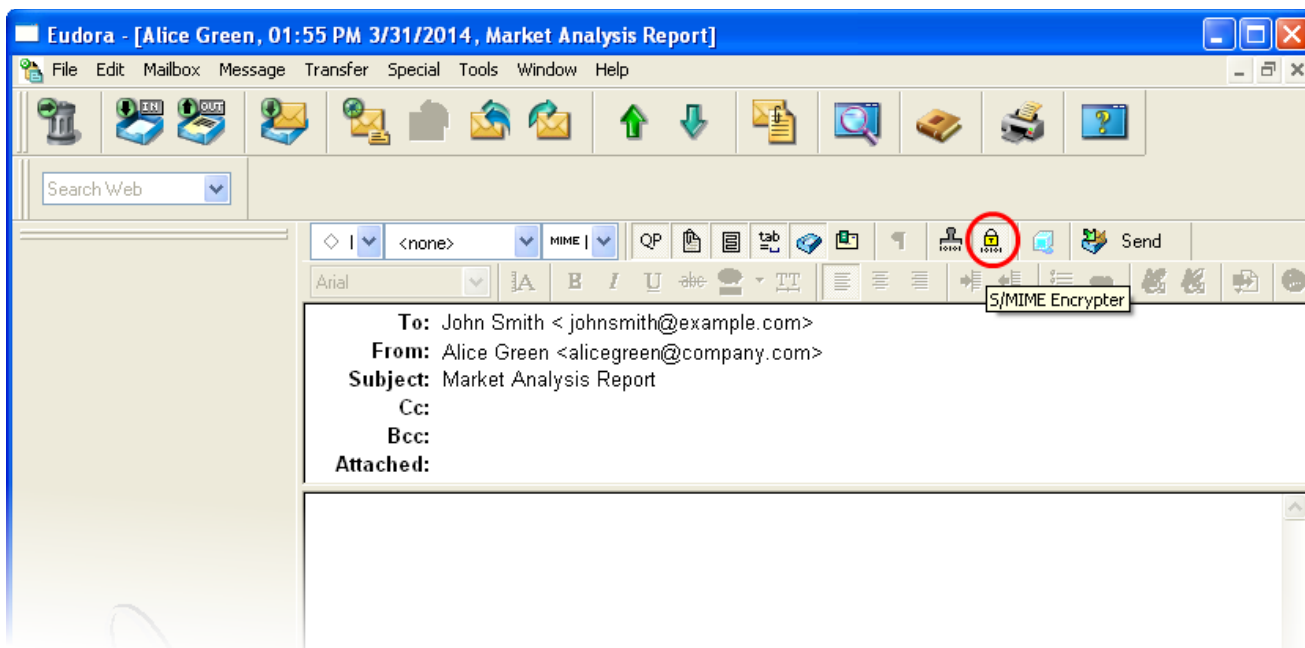




**Note:** If you have multiple signing certificates, then you have to choose one from the dialog box and click OK.

**To encrypt your mail:**

1. Compose your email and attach files as usual.
2. Click **S/MIME Encrypter** from the tool bar.



3. Click **'Send'**.

# About Comodo

The Comodo organization is a global innovator and developer of cyber security solutions, founded on the belief that every single digital transaction deserves and requires a unique layer of trust and security. Building on its deep history in SSL certificates, antivirus and endpoint security leadership, and true containment technology, individuals and enterprises rely on Comodo's proven solutions to authenticate, validate and secure their most critical information.

With data protection covering endpoint, network and mobile security, plus identity and access management, Comodo's proprietary technologies help solve the malware and cyber-attack challenges of today. Securing online transactions for thousands of businesses, and with more than 85 million desktop security software installations, Comodo is Creating Trust Online®. With United States headquarters in Clifton, New Jersey, the Comodo organization has offices in China, India, the Philippines, Romania, Turkey, Ukraine and the United Kingdom.

**Comodo Security Solutions, Inc.**

1255 Broad Street

Clifton, New Jersey 07013

United States

Tel : +1.888.266.6361

Tel : +1.703.581.9361

Email: [sales@Comodo.com](mailto:sales@Comodo.com)**Comodo CA Limited**

3rd floor, Office Village Exchange Quay

Trafford Road, Salford, Manchester M5 3EQ

United Kingdom

Tel : +44 (0) 161 874 7070

Fax : +44 (0) 161 877 1767

For additional information on Comodo - visit <https://www.comodo.com>