

## Importing and exporting your Email or Personal Authentication certificate using Google Chrome

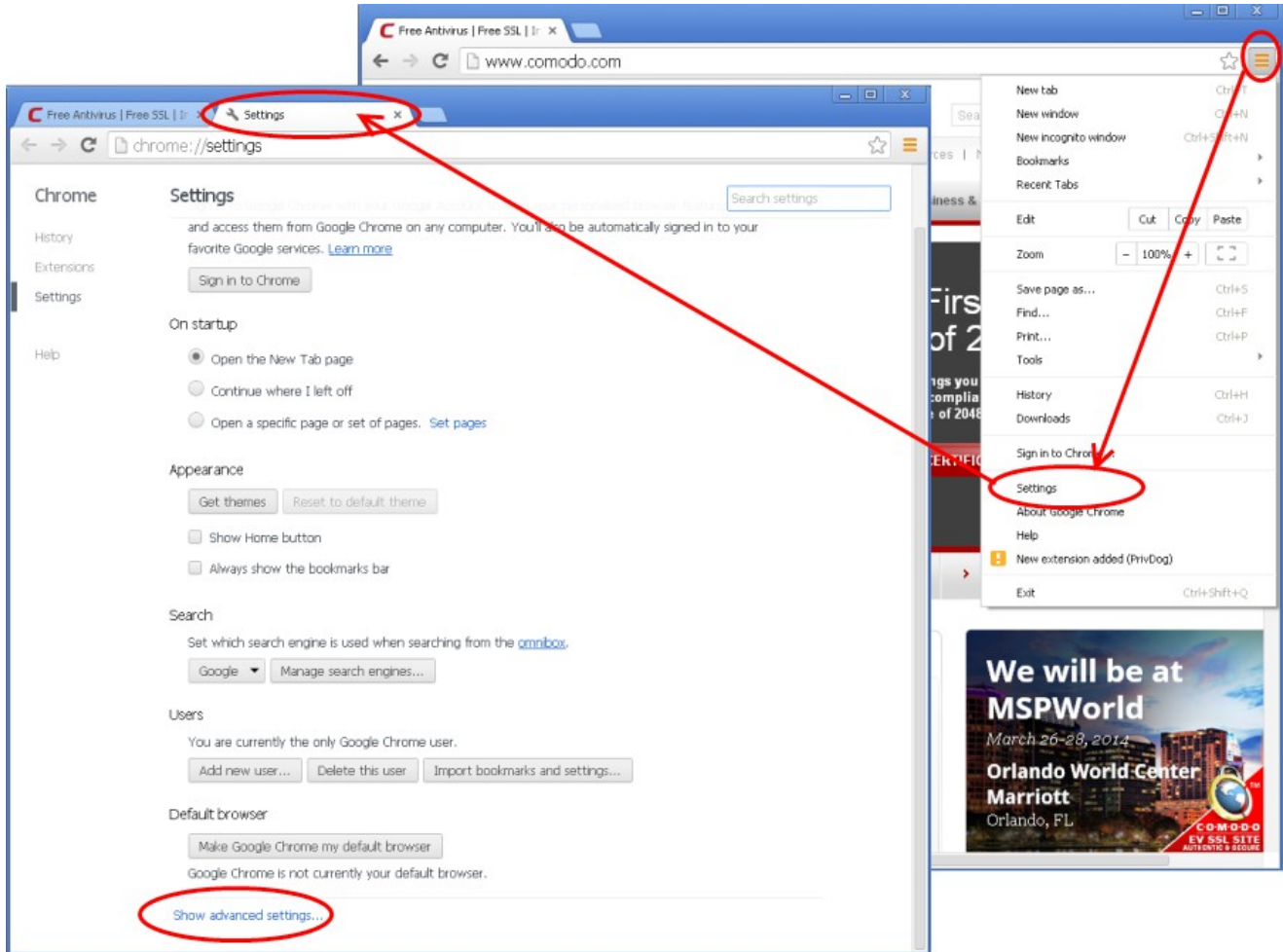
This document explains how you can use Google Chrome to import or export an existing CPAC/Email certificate.

[Exporting your certificate from Google Chrome](#)

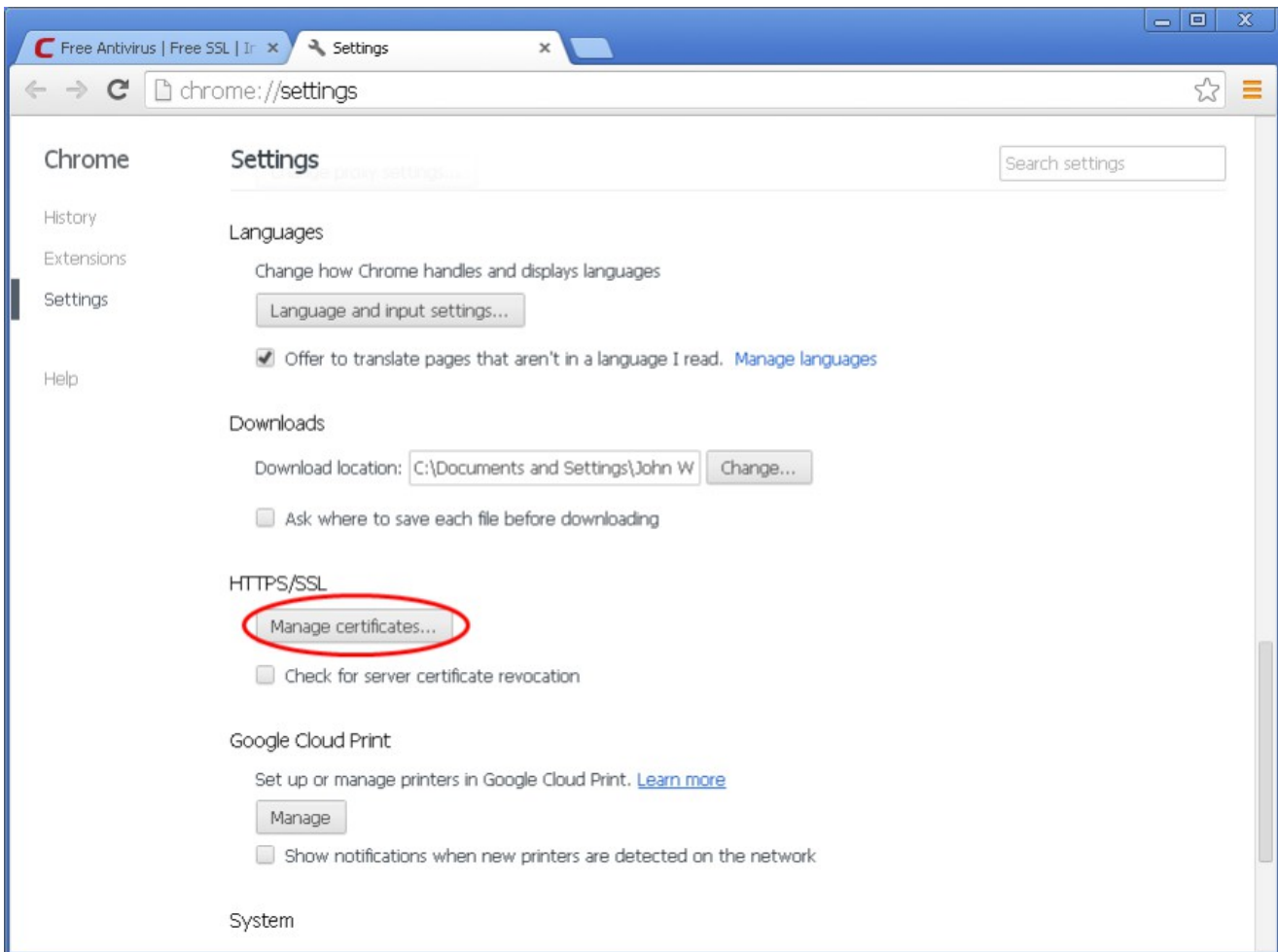
[Import your certificate into Google Chrome](#)

### **Exporting your Certificate from Google Chrome**

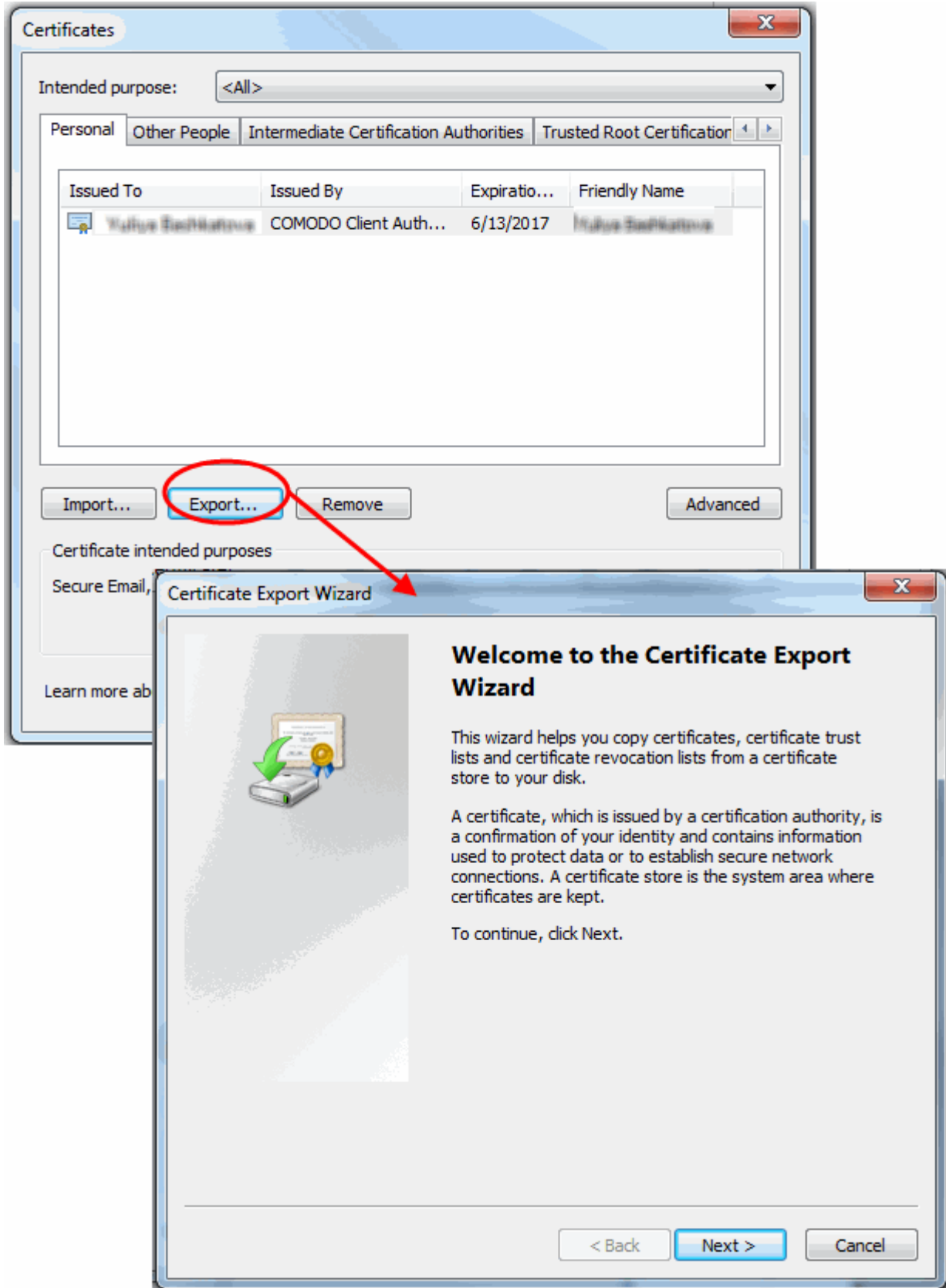
1. Open Google Chrome, then click the **'Menu icon'** followed by **'Settings'**.
2. Scroll down the settings page and click **Show Advanced Settings**:

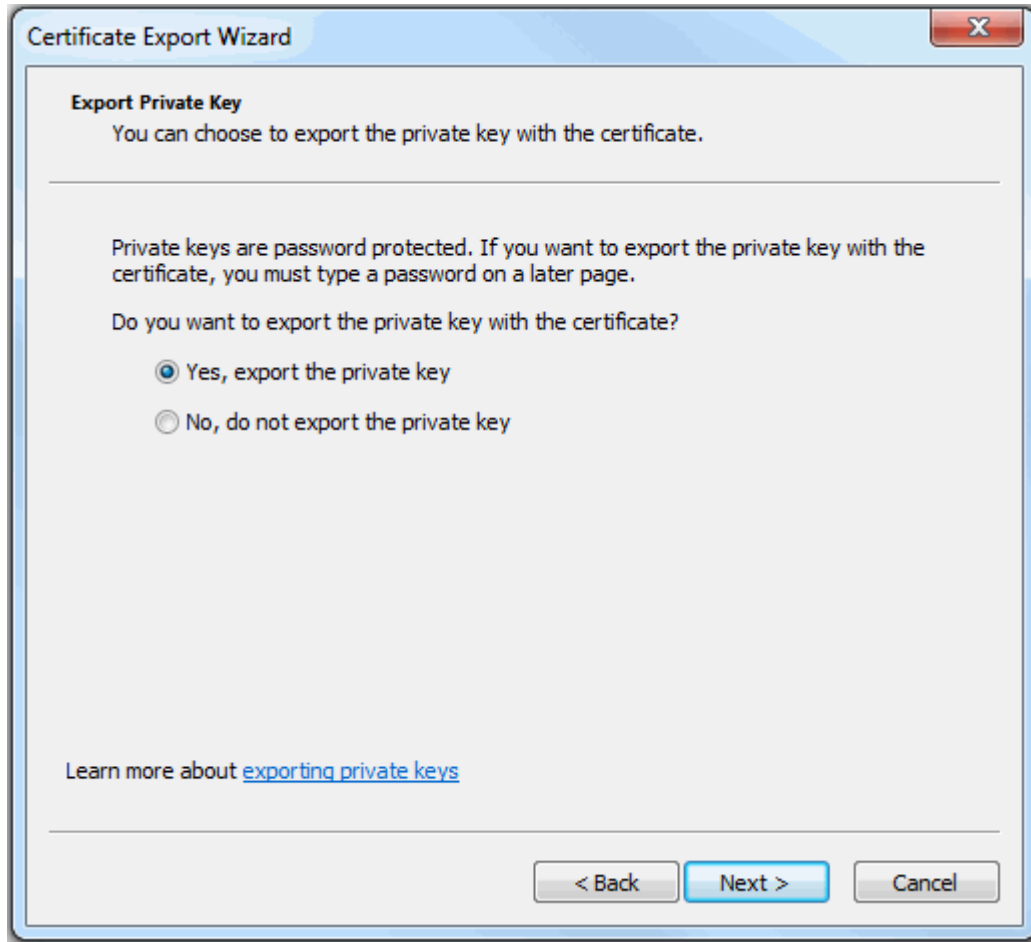


3. Scroll down again and click the **'Manage Certificates'** button under HTTPS/SSL.



4. In the Certificates interface, make sure the **'Personal'** tab is selected.
5. Choose the certificate you wish to export from the list and click **'Export...'** then **'Next'**:

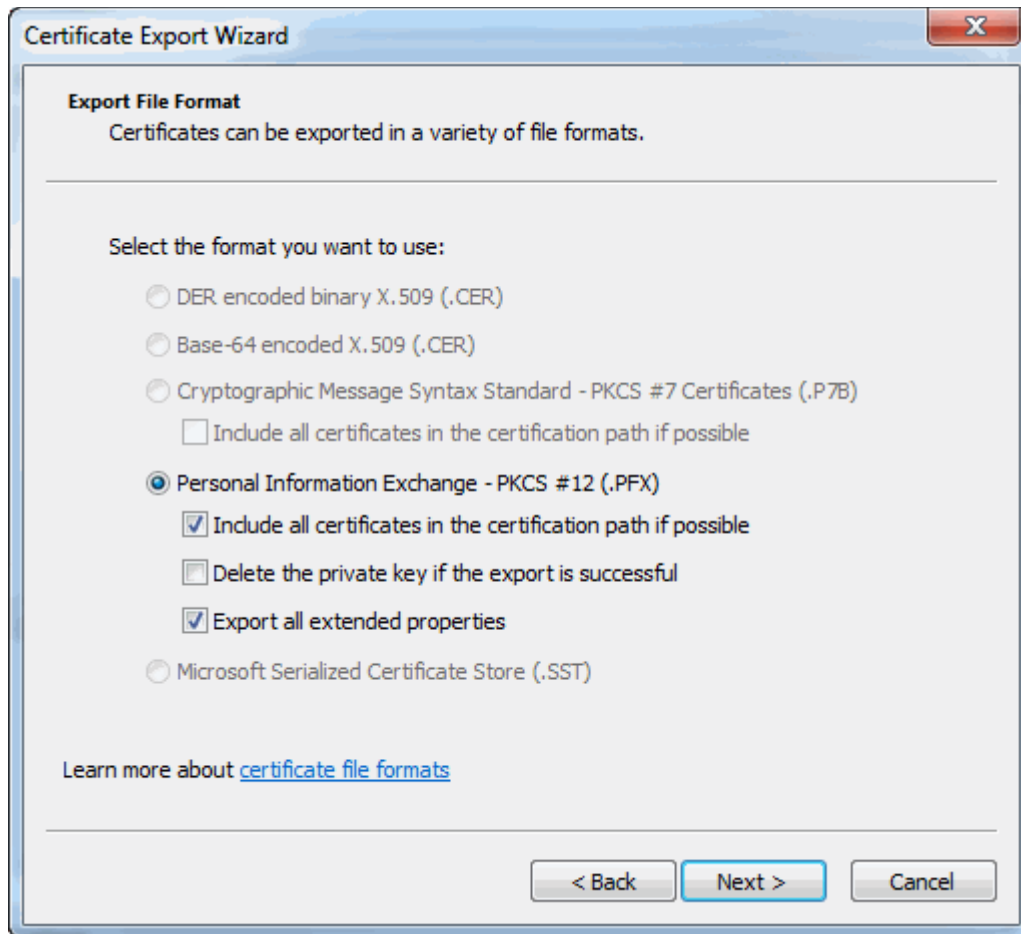




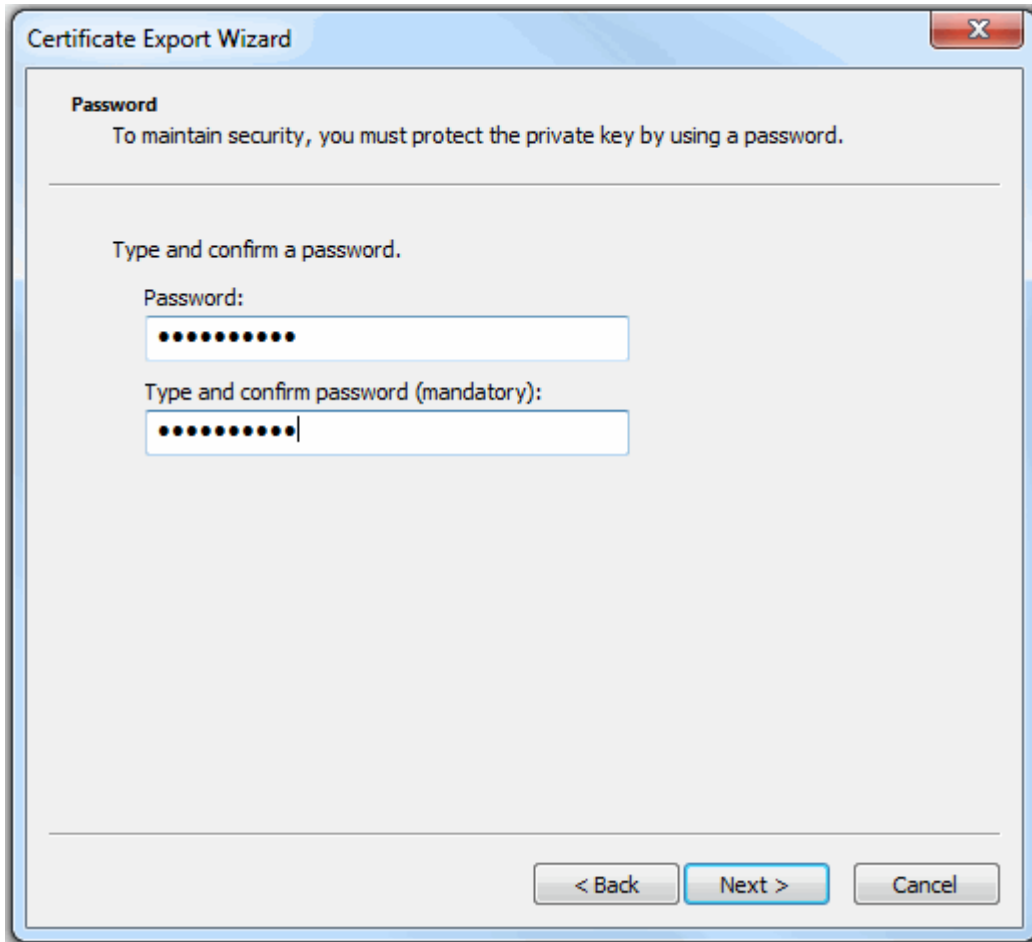
- You must export the private key if you wish to use the certificate for digitally signing mail/documents and/or for authenticating yourself to websites. So if you intend to import your certificate into another browser/email client or mobile device, then we advise you choose, '[Yes, export the private key](#)'.
- If you only need to export the certificate for the (more limited) purposes of sharing or archiving your public key, then select '[No, do not export the private key](#)'.

**Option 1 (export with private key)**

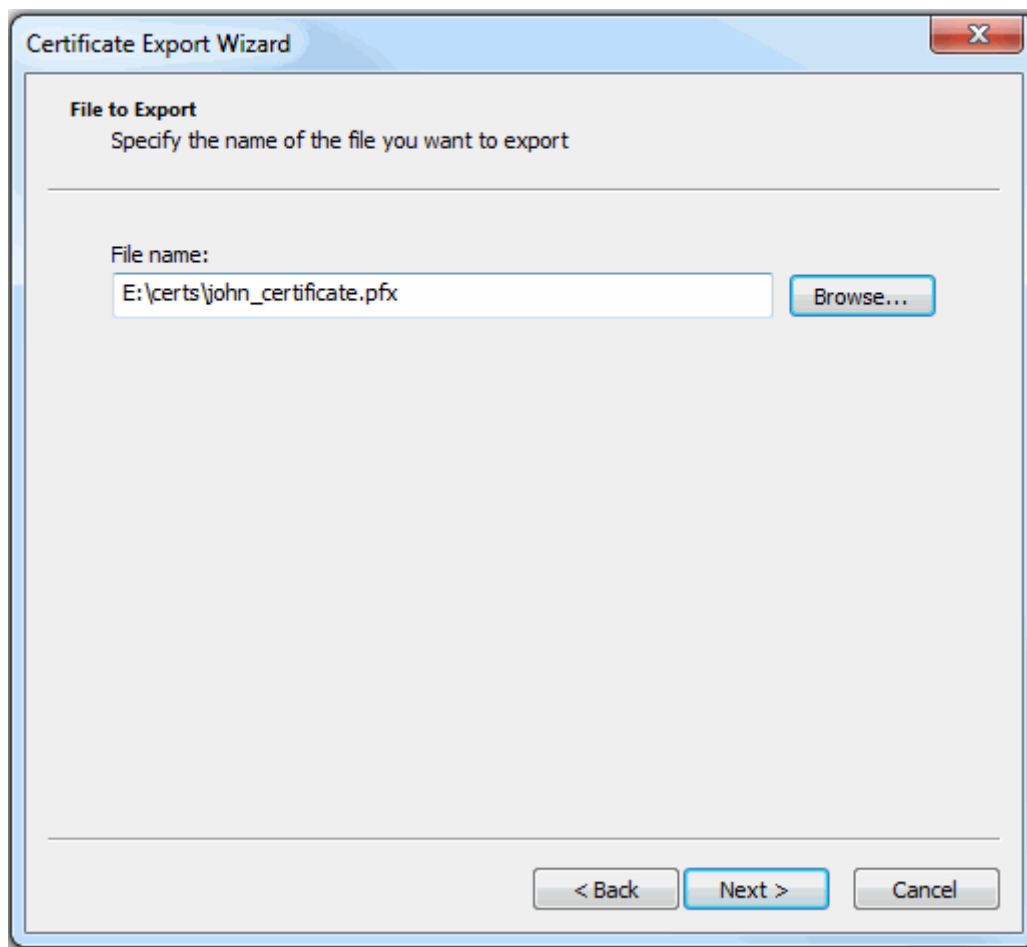
6. Select 'Yes, export the private key' and click '**Next**'



7. Select 'Personal Information Exchange' and make sure 'Include all certificates in the certification path if possible' is selected and click **Next**.
8. Next, create a password to protect the PKCS12. This will be required when you later import the certificate into another browser/mail client or device.

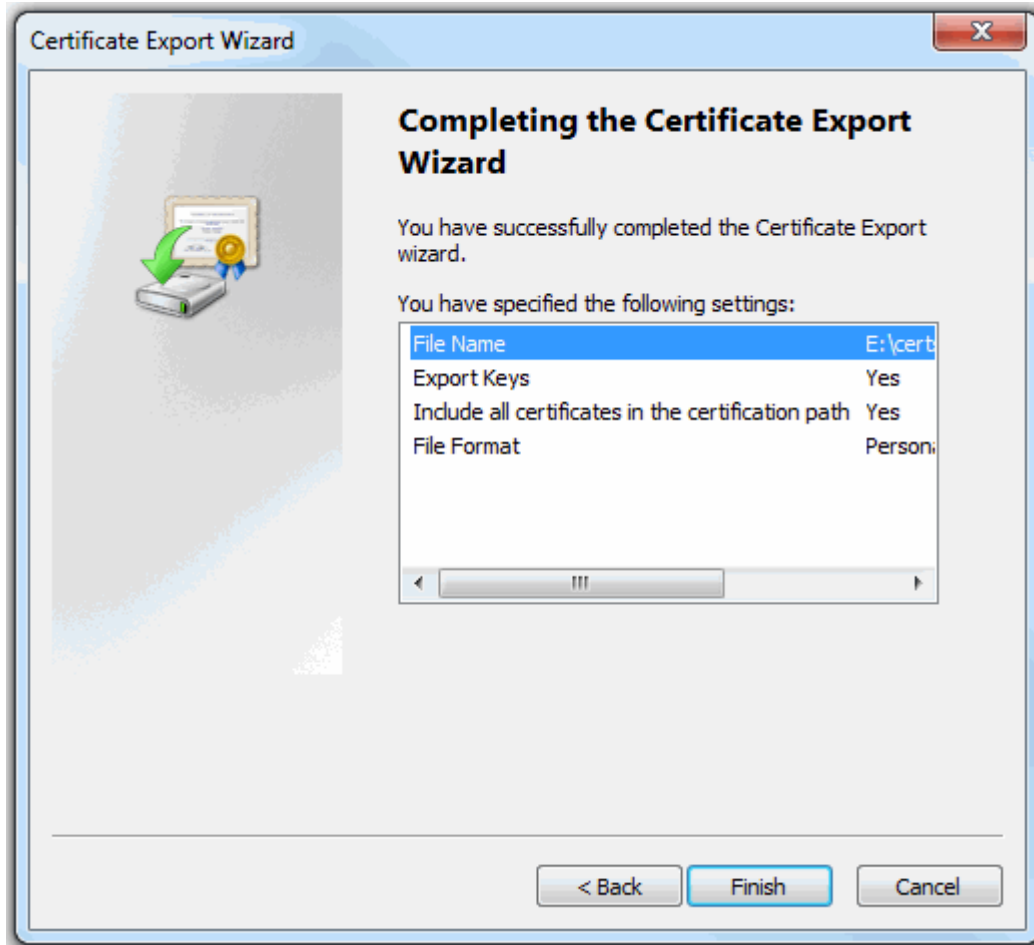


9. Your certificate will be exported to a PKCS12 file. Click **'Browse'** and navigate to the location where the certificate should be saved and click **'Next'**.



10. Click **'Finish'**.



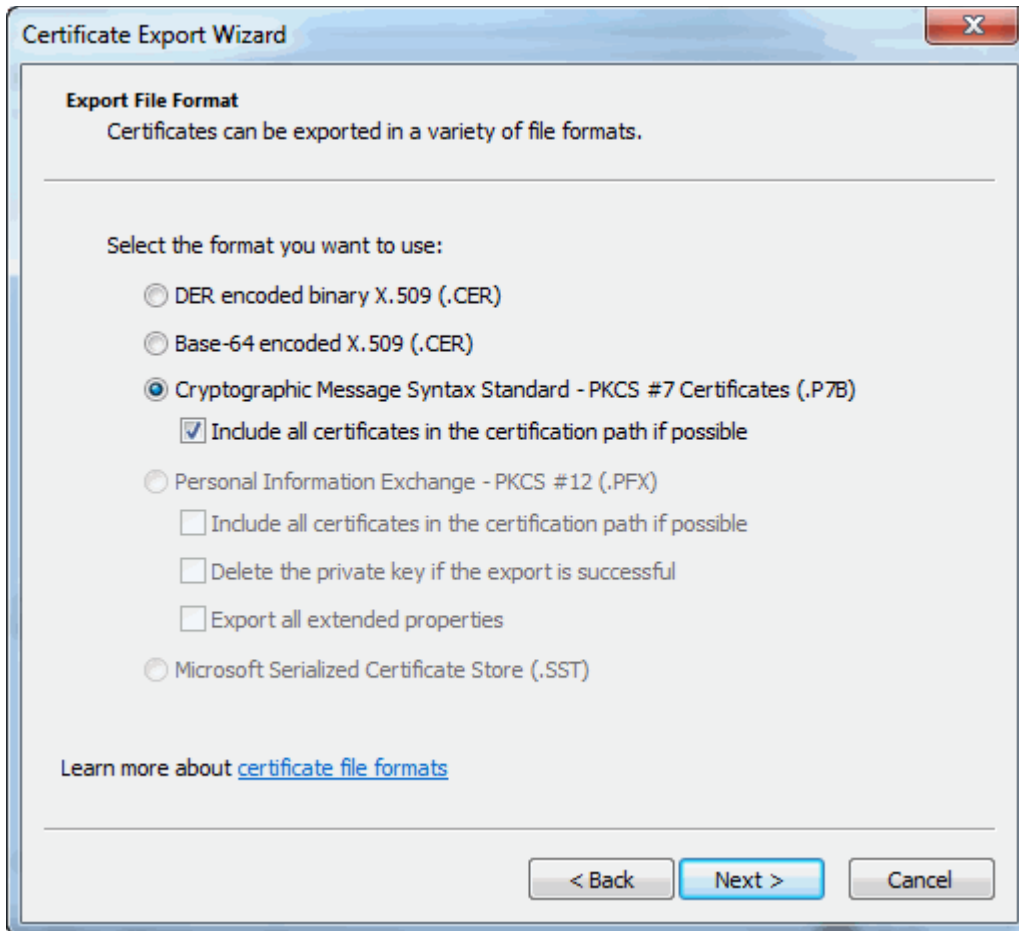


11. Click 'OK' to finalize and that's it! You have successfully exported your Comodo Personal Authentication certificate.

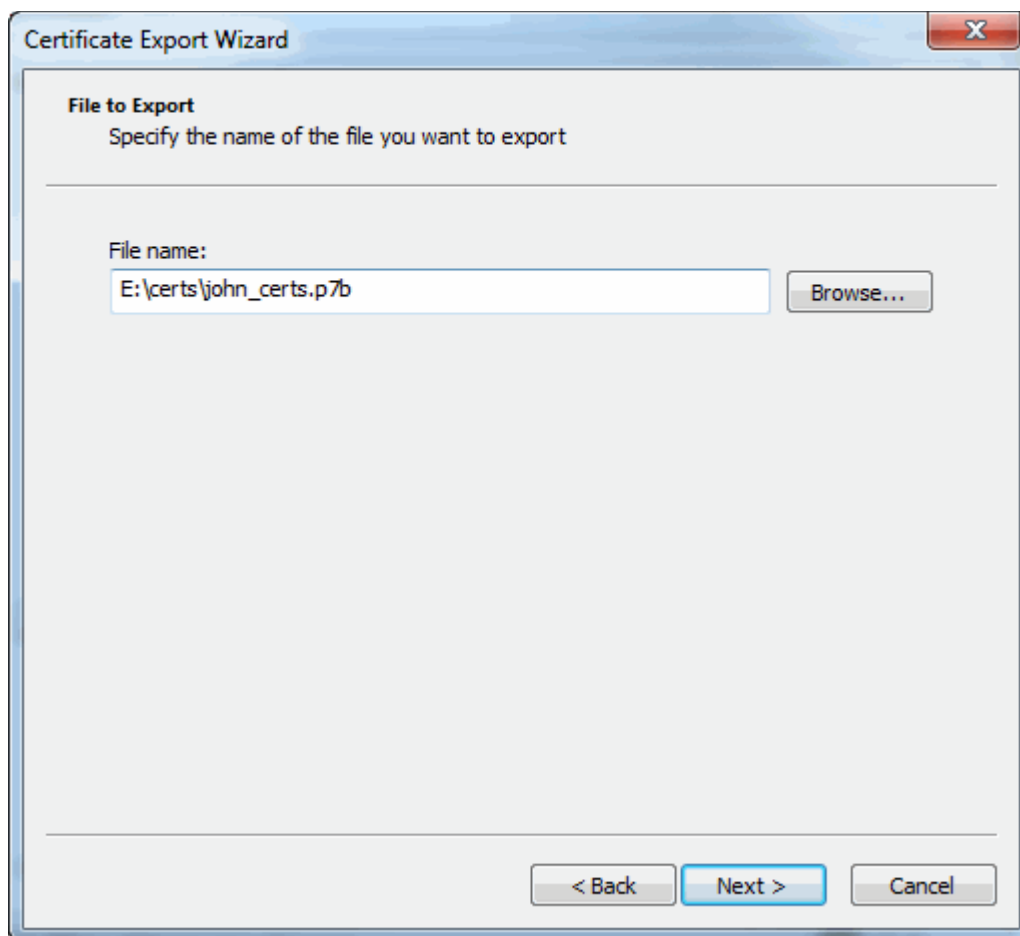


**Option 2 (export without private key)**

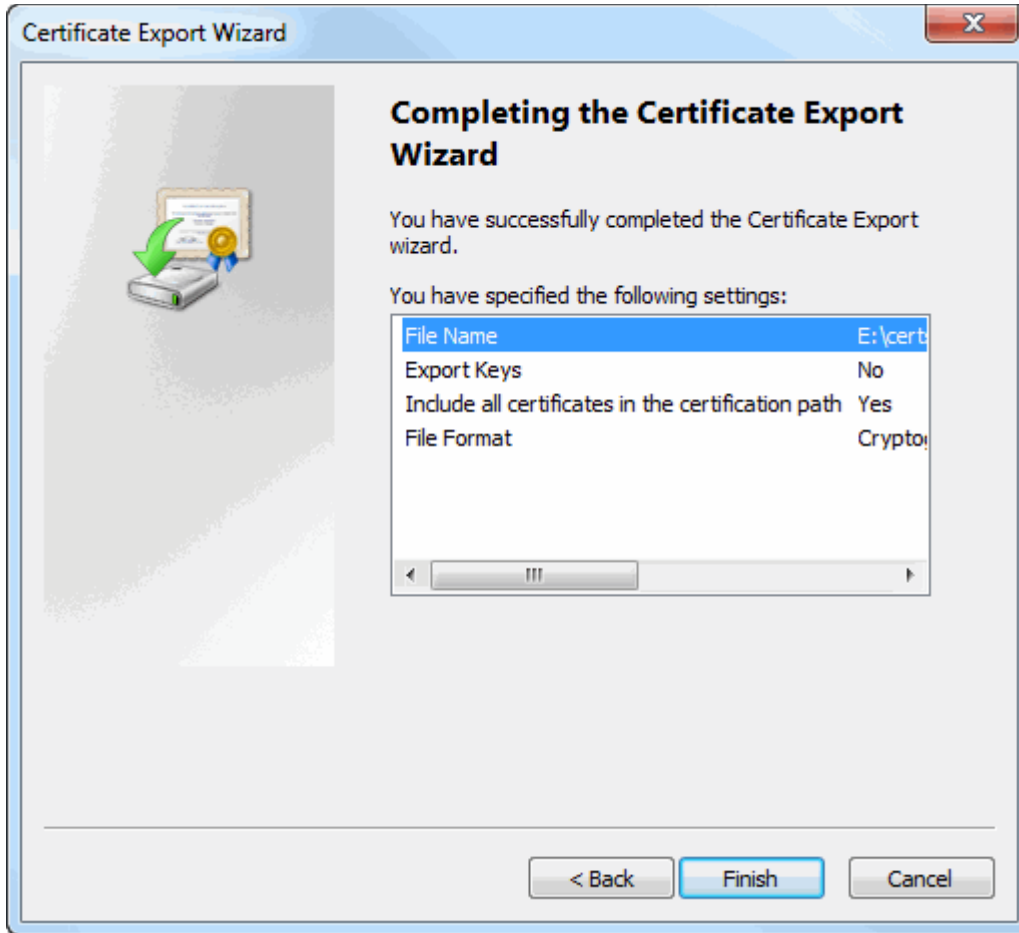
6. Select 'No, do not export the private key' and click '**Next**'



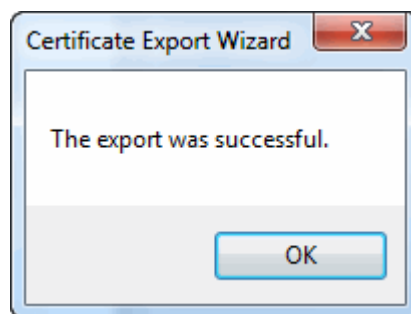
7. Select 'Cryptographic Message Syntax Standard' and make sure 'Include all certificates in the certification path if possible' is selected. Click '**Next**' to proceed.



8. Click '**Browse**' and navigate to the location where the certificate should be saved and click '**Next**'.



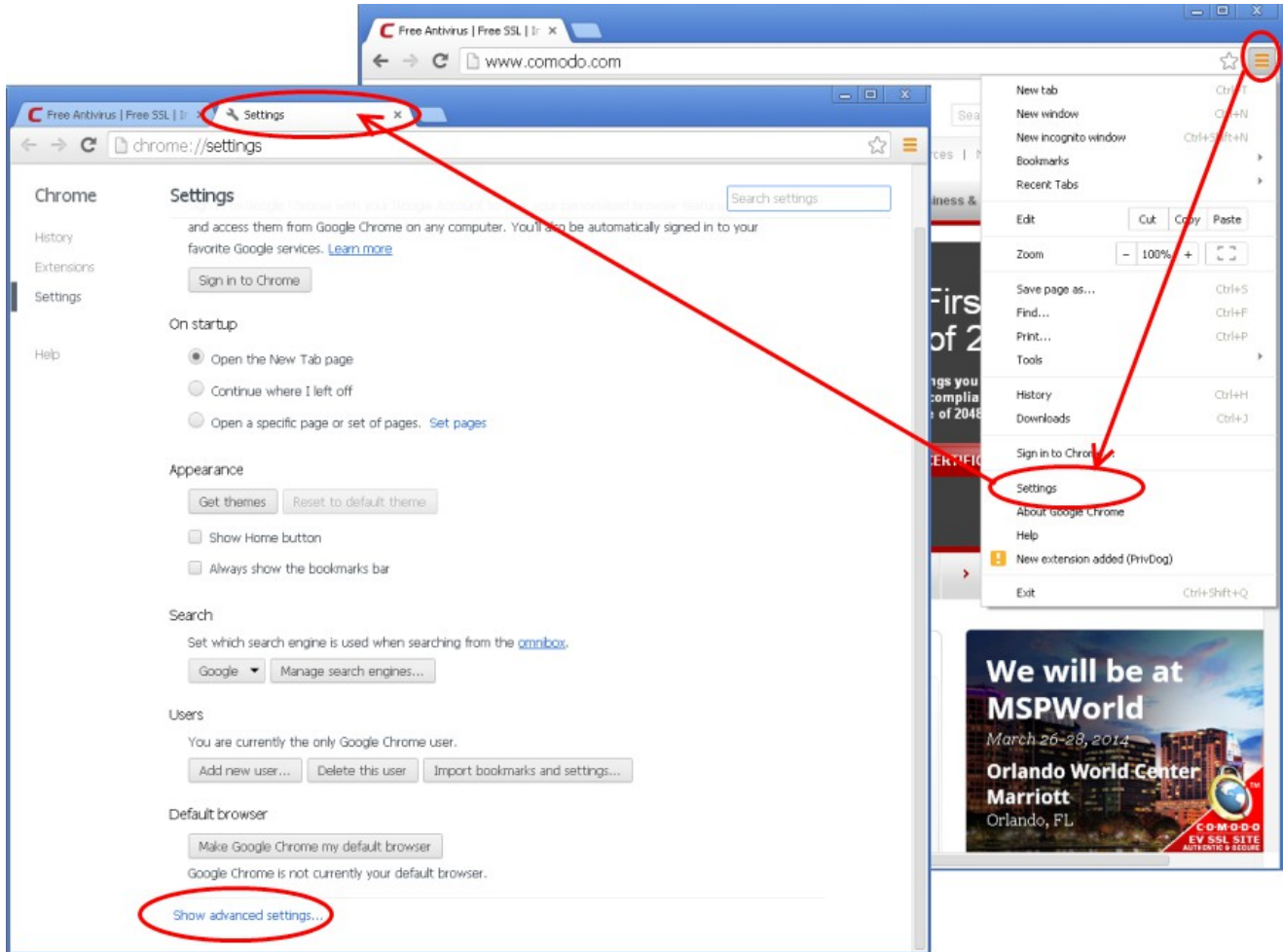
9. Click **'Finish'**.



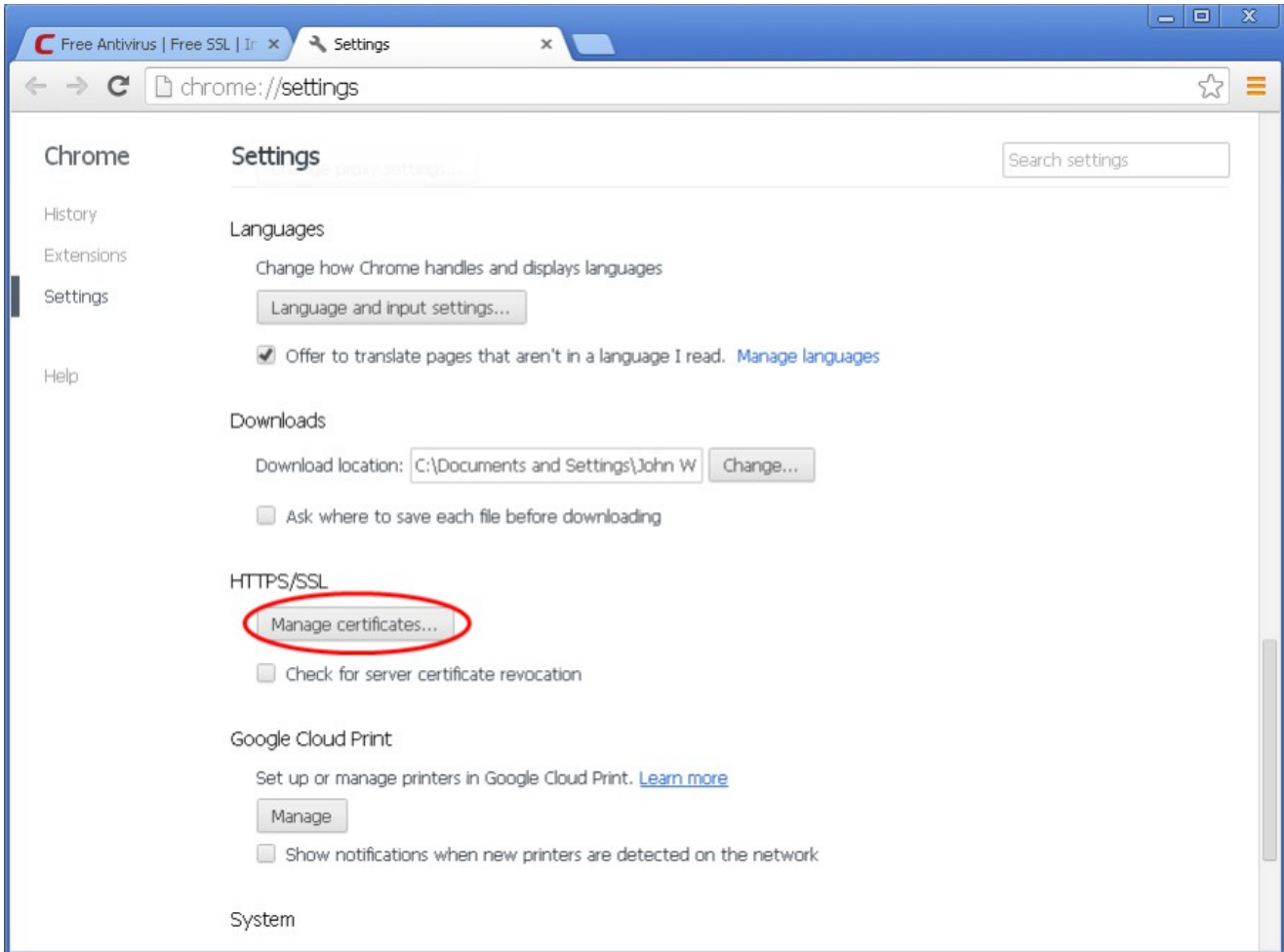
That's it. You have successfully exported your Comodo Personal Authentication certificate from Google Chrome.

### **Importing your Certificate into Google Chrome:**

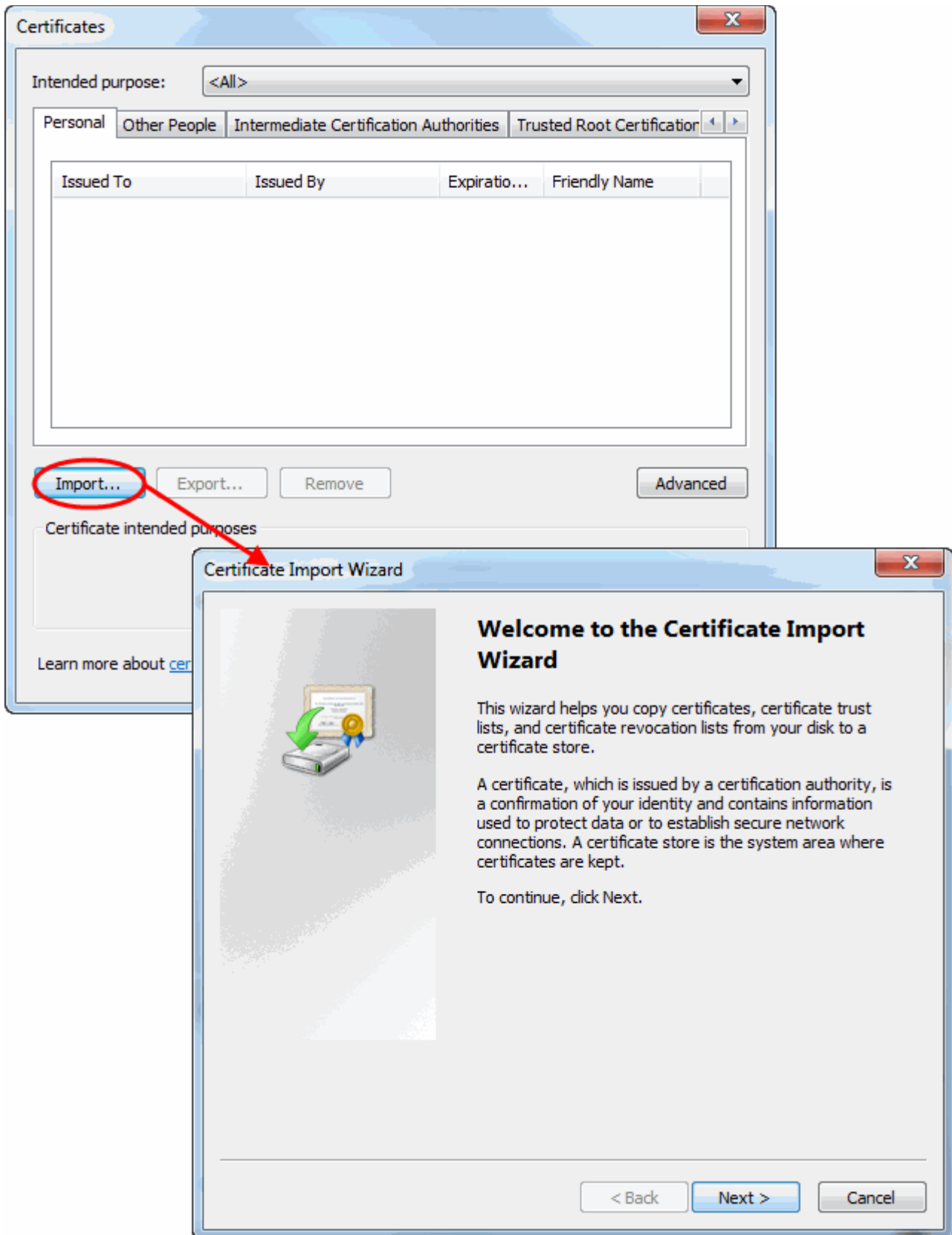
1. Open Google Chrome, then click **'Menu icon' > 'Settings'**.
2. Scroll down and click the **Show Advanced Settings** link.



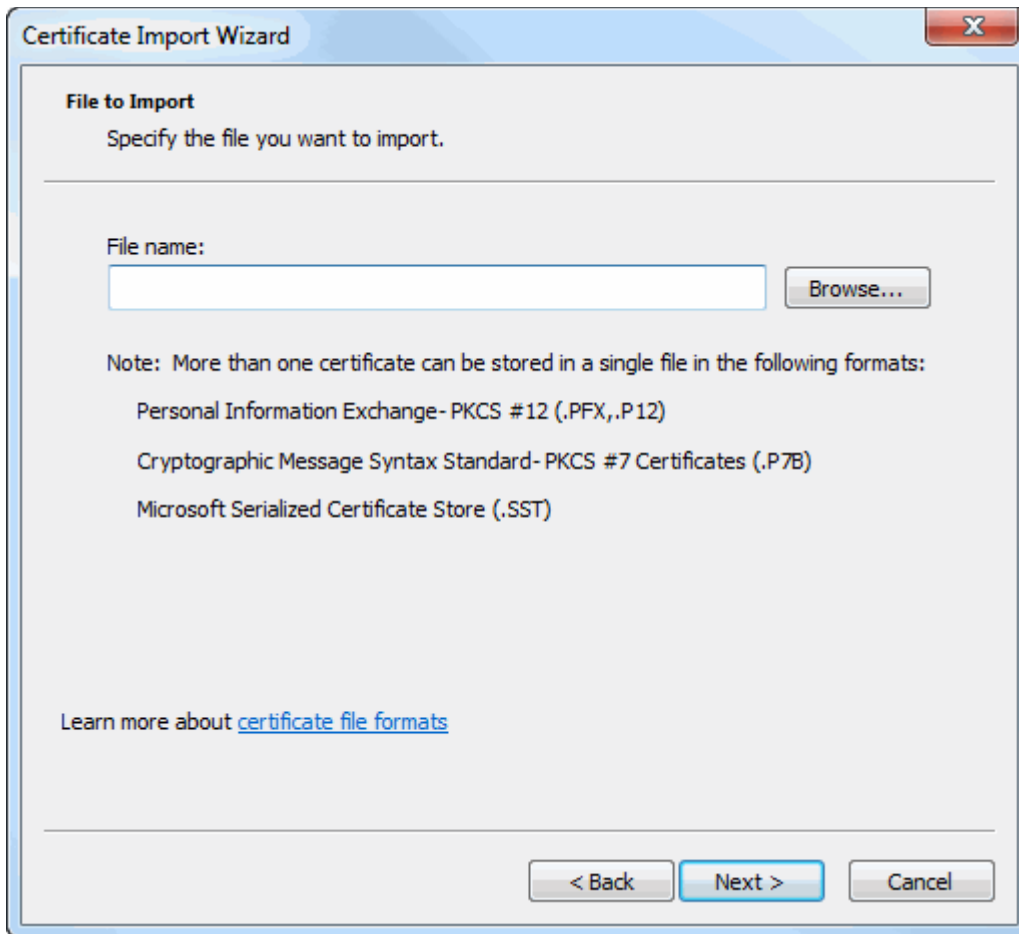
3. Scroll down again and click the **Manage Certificates** button under **HTTPS/SSL**.



4. In the Certificates interface, make sure the **'Personal'** tab is selected, click **'Import'** and then click **'Next'**.

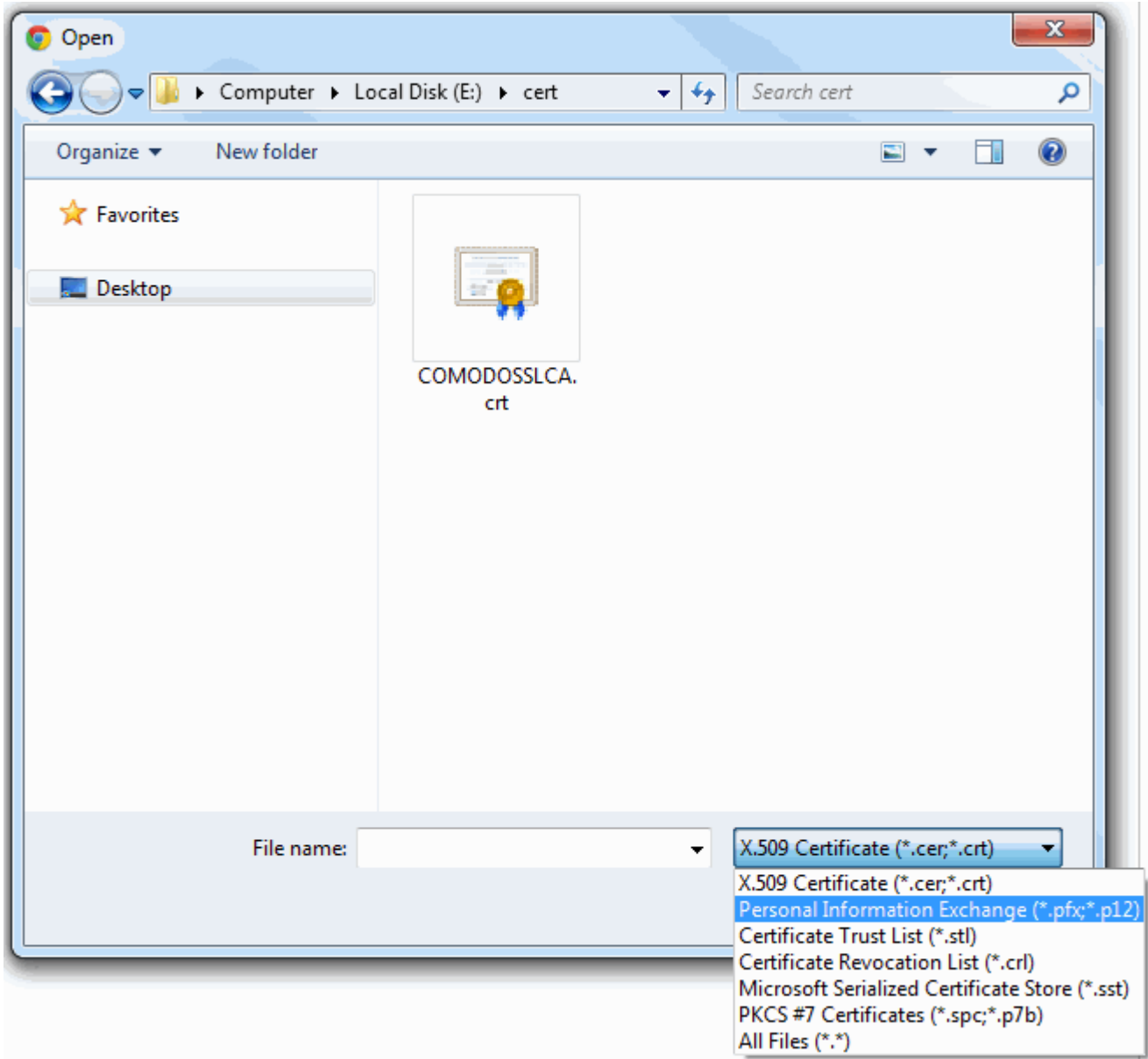


5. Click **'Browse'** in the next step and navigate to the location of your PKCS12 certificate file.

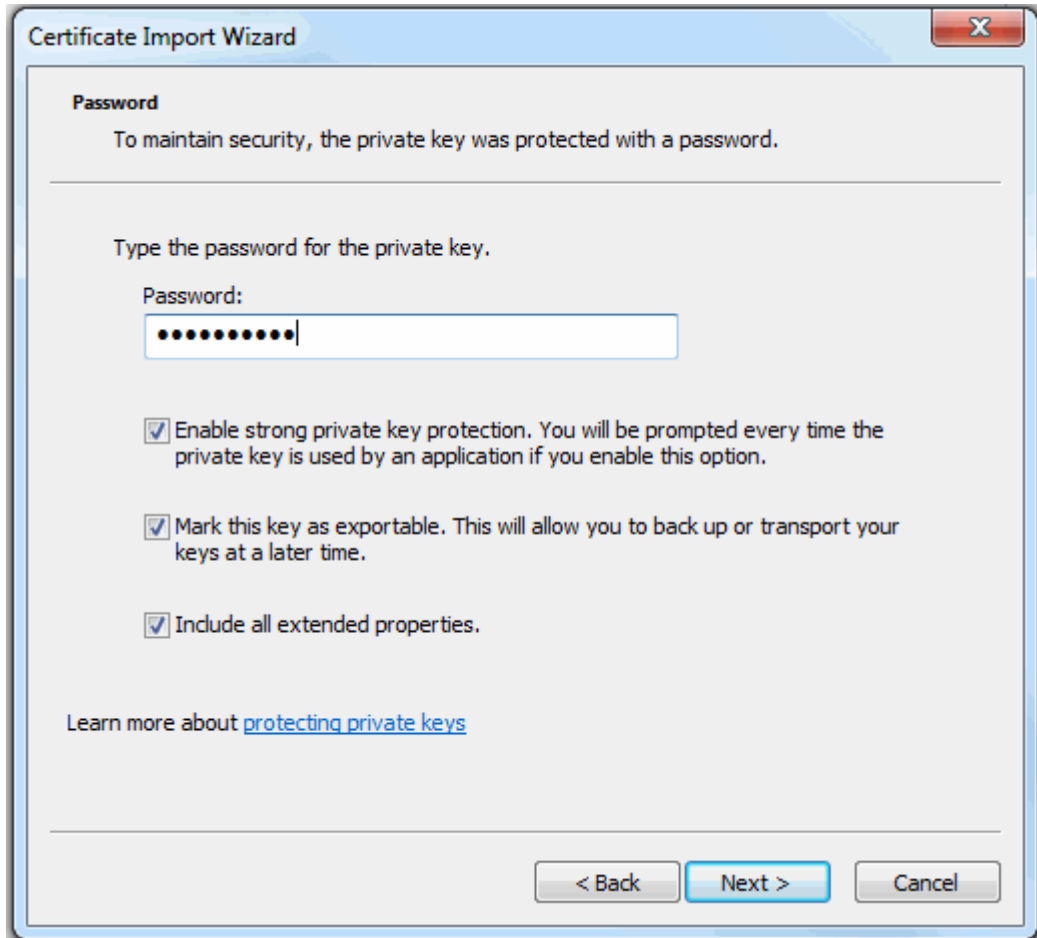


6. Locate your certificate file (.p12) and click **'Open'**:

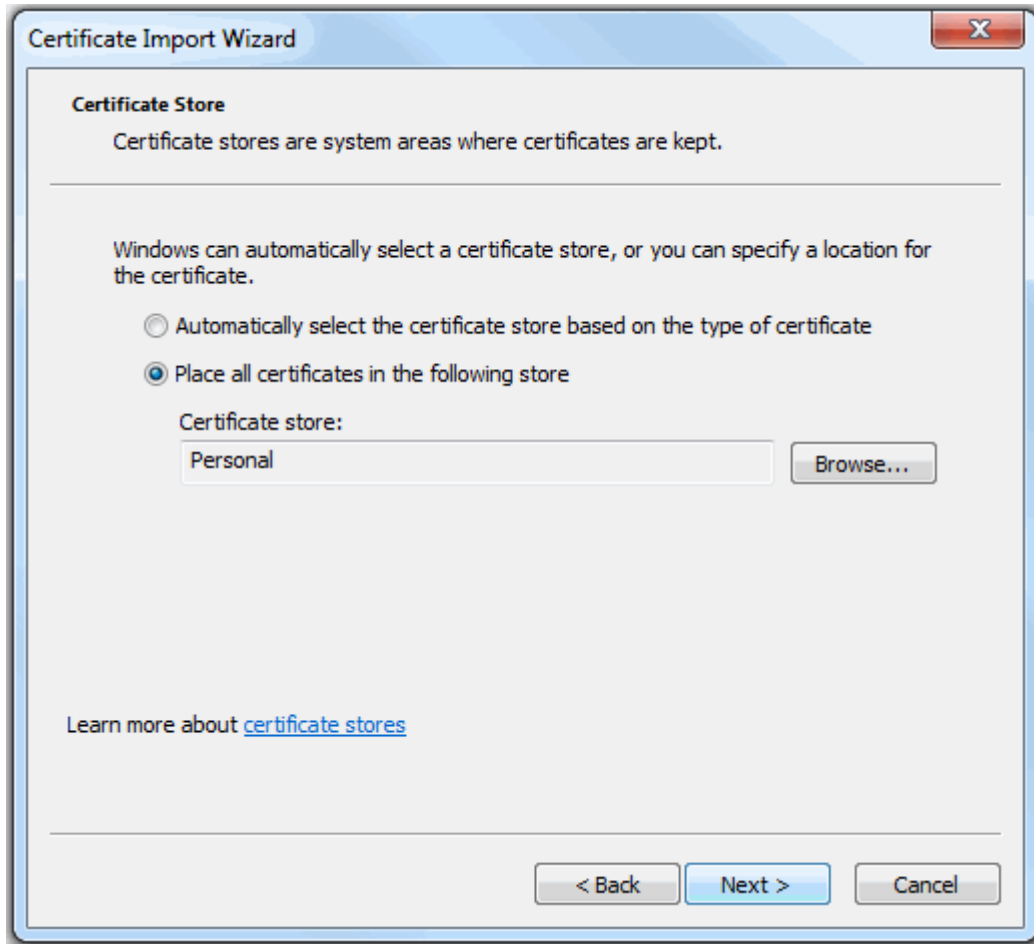




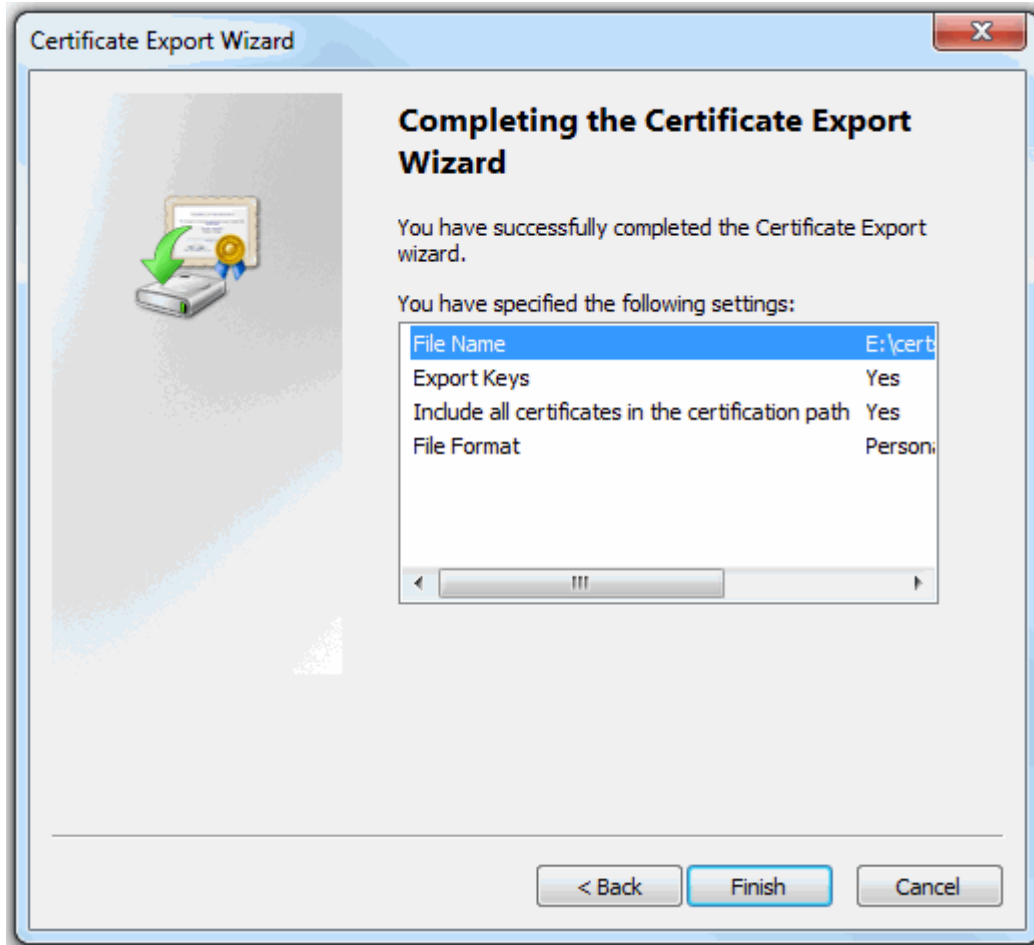
7. To complete the installation process, you are required to enter the PIN (password) you set up for the certificate during the enrollment process. If you have forgotten your password, contact your system administrator who will be able to reset it for you.



8. Next you will be prompted to choose which certificate store for your certificate. Unless your administrator has specified otherwise, you should leave this at the default **Place all certificates in the following store** option.



9. Click '**Next**' to proceed to the review and confirm stage:



10. Click **Finish** to complete the process. The certificate will be imported.

11. Select the security level for storing the Private Key in your system and click **OK**.



That's it. You have successfully imported your Comodo Personal Authentication certificate into Google Chrome.

# About Comodo

The Comodo organization is a global innovator and developer of cyber security solutions, founded on the belief that every single digital transaction deserves and requires a unique layer of trust and security. Building on its deep history in SSL certificates, antivirus and endpoint security leadership, and true containment technology, individuals and enterprises rely on Comodo's proven solutions to authenticate, validate and secure their most critical information.

With data protection covering endpoint, network and mobile security, plus identity and access management, Comodo's proprietary technologies help solve the malware and cyber-attack challenges of today. Securing online transactions for thousands of businesses, and with more than 85 million desktop security software installations, Comodo is Creating Trust Online®. With United States headquarters in Clifton, New Jersey, the Comodo organization has offices in China, India, the Philippines, Romania, Turkey, Ukraine and the United Kingdom.

**Comodo Security Solutions, Inc.**

1255 Broad Street

Clifton, New Jersey 07013

United States

Tel : +1.888.266.6361

Tel : +1.703.581.9361

Email: [sales@Comodo.com](mailto:sales@Comodo.com)**Comodo CA Limited**

3rd floor, Office Village Exchange Quay

Trafford Road, Salford, Manchester M5 3EQ

United Kingdom

Tel : +44 (0) 161 874 7070

Fax : +44 (0) 161 877 1767

For additional information on Comodo - visit <https://www.comodo.com>