

## Importing and exporting your Email or Personal Authentication certificate using Chrome on Mac OS X

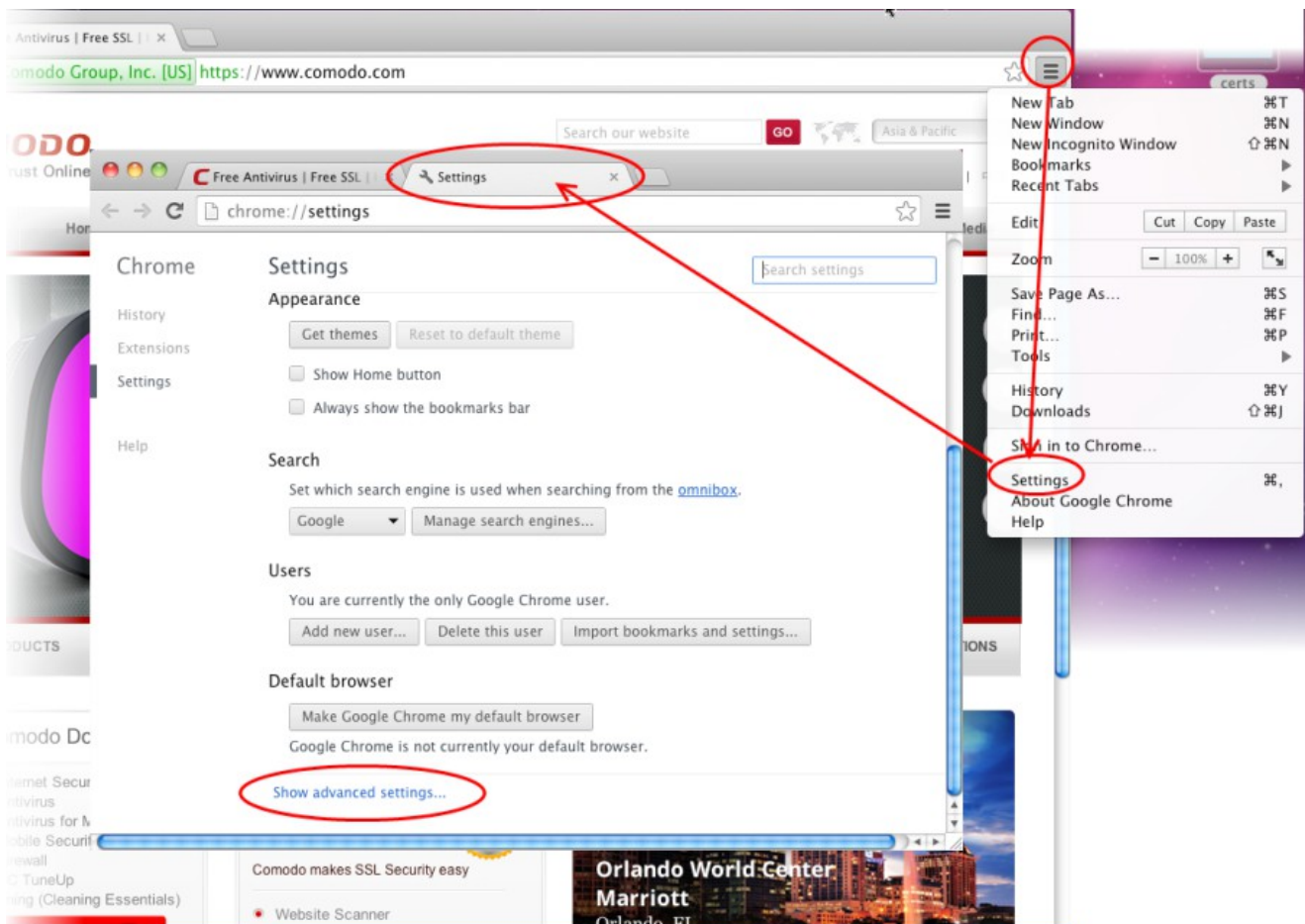
This document explains how you can use Chrome on Mac OS X to import or export an existing CPAC/Email certificate.

[Exporting your certificate from Google Chrome](#)

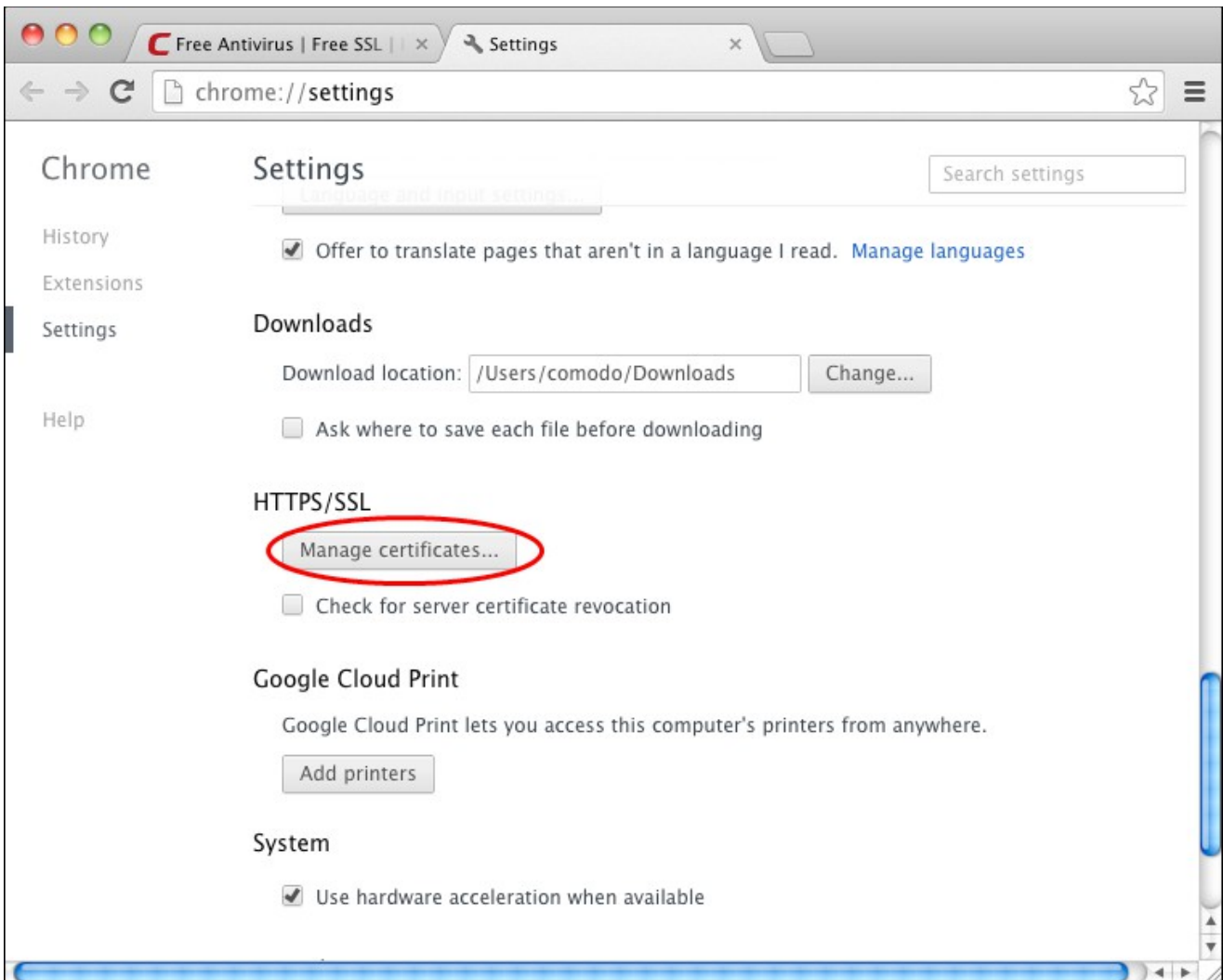
[Import your certificate into Google Chrome](#)

### Exporting your Certificate from Chrome

1. Open Google Chrome, then click the **'Menu icon'** followed by **'Settings'**.
2. Scroll down the setting page and click **Show Advanced Settings**.

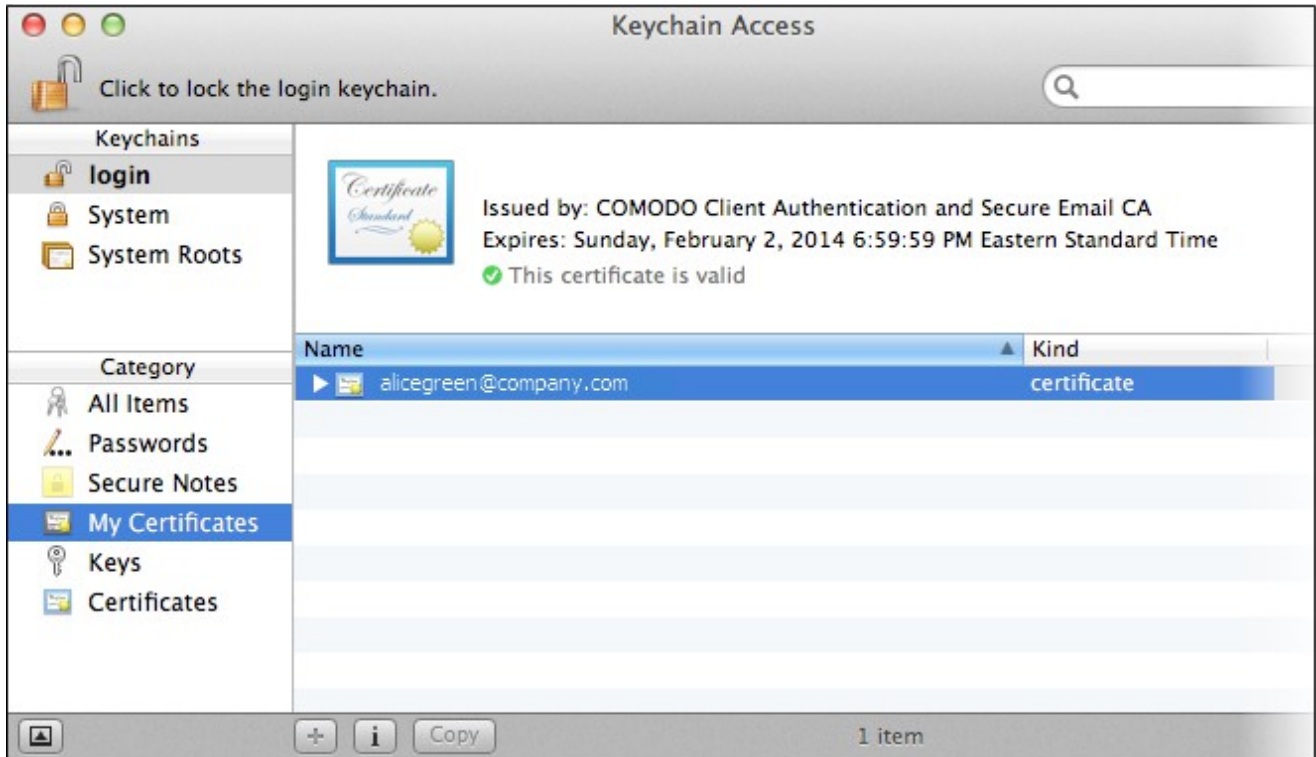


3. Scroll down the page and click the **'Manage Certificates'** button under HTTPS/SSL.

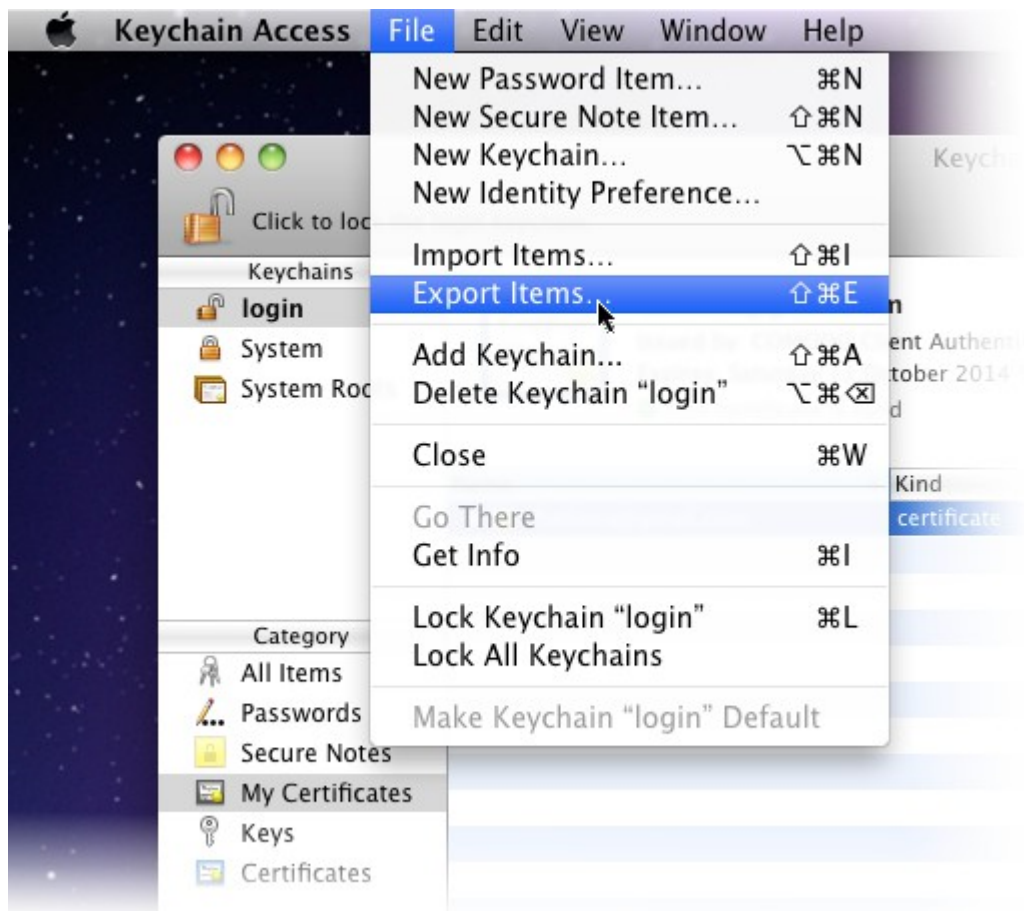


The Keychain Access screen will be displayed. Chrome uses the Keychain Access utility built into MAC OS manage digital certificate

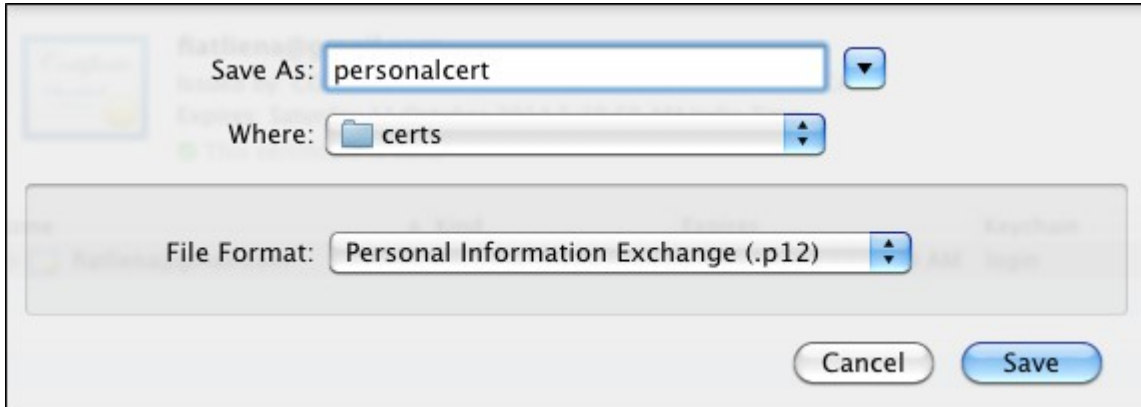
4. Under **'Keychains'** on the left, select **'Login'** and click **'My Certificates'** in the **'Category'** column.



5. Select the certificate that you want to export and open **File > Export Items...**



6. Choose 'Personal Information Exchange (.p12)' as the file format. Create a name for the file, choose a location to export/save location and click '**Save**'.



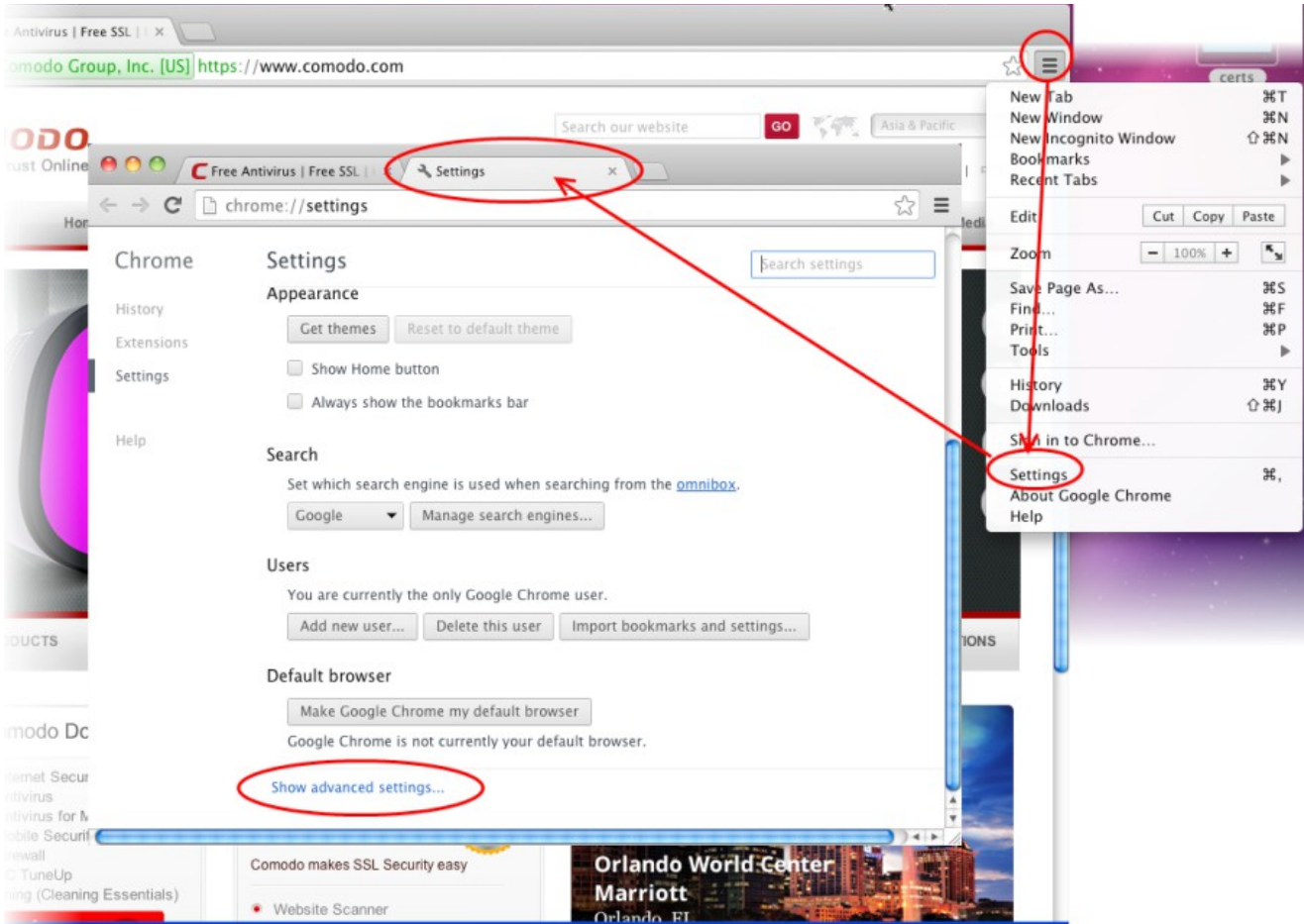
7. Next, create a password to protect the exported file. This will be requested should you later import the certificate into another browser/mail client or device.



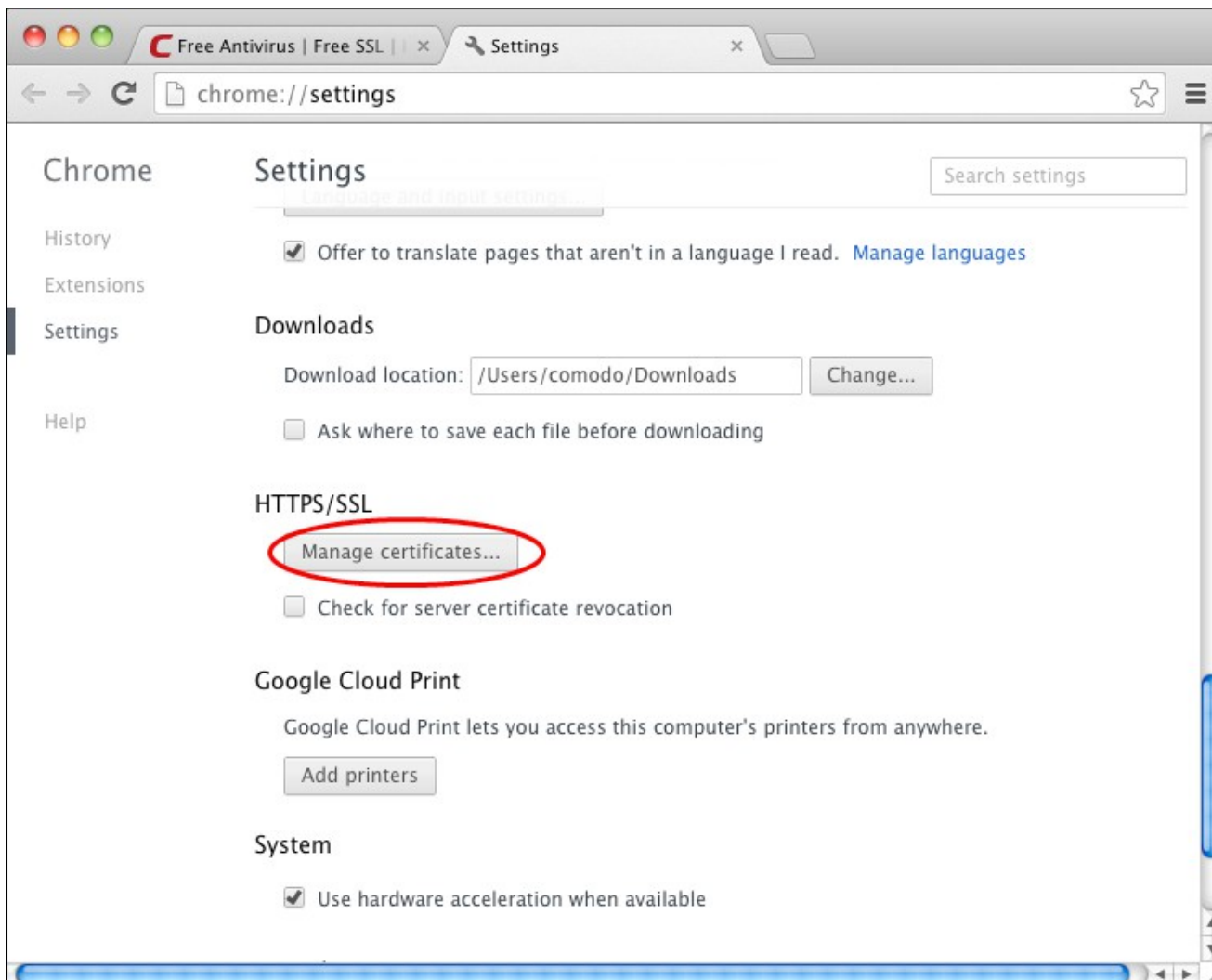
8. Click '**OK**' to finalize and that's it! You have successfully exported your Comodo Personal Authentication certificate.

## Importing your Certificate into Chrome:

1. Open Google Chrome, then click '**Menu icon**' followed by '**Settings**'.
2. Scroll down and click the **Show Advanced Settings** link.

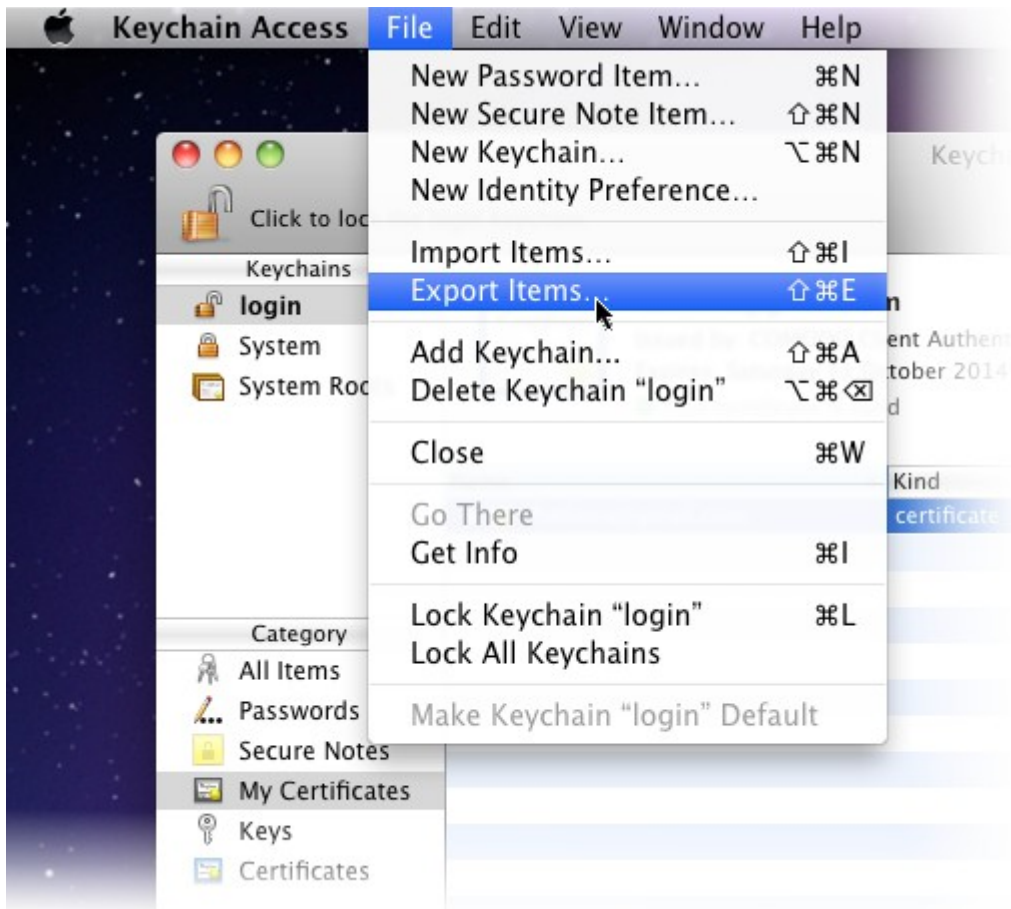


3. Scroll down again and click the **Manage Certificates** button under **HTTPS/SSL**.

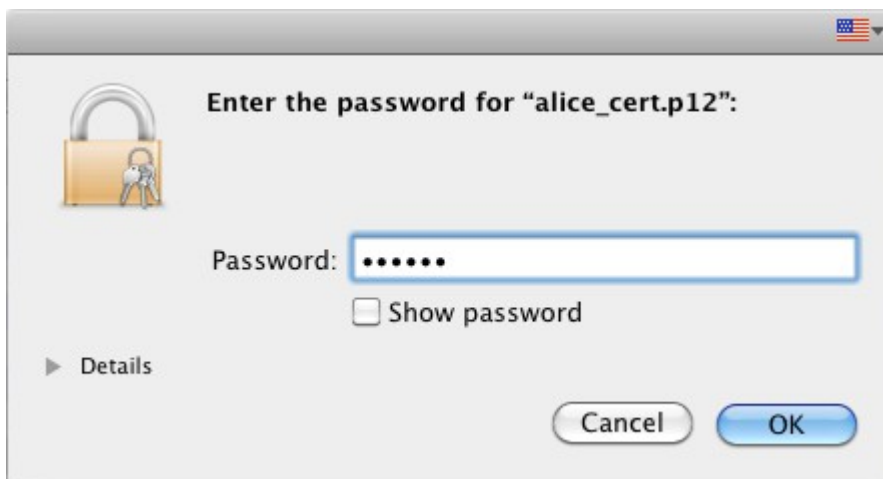


The Keychain Access utility will open. Chrome uses the Keychain Access utility built into MAC OS manage digital certificates.

4. Under '**Keychains**' on the left, select '**Login**' then '**File**' > '**Import Items...**'

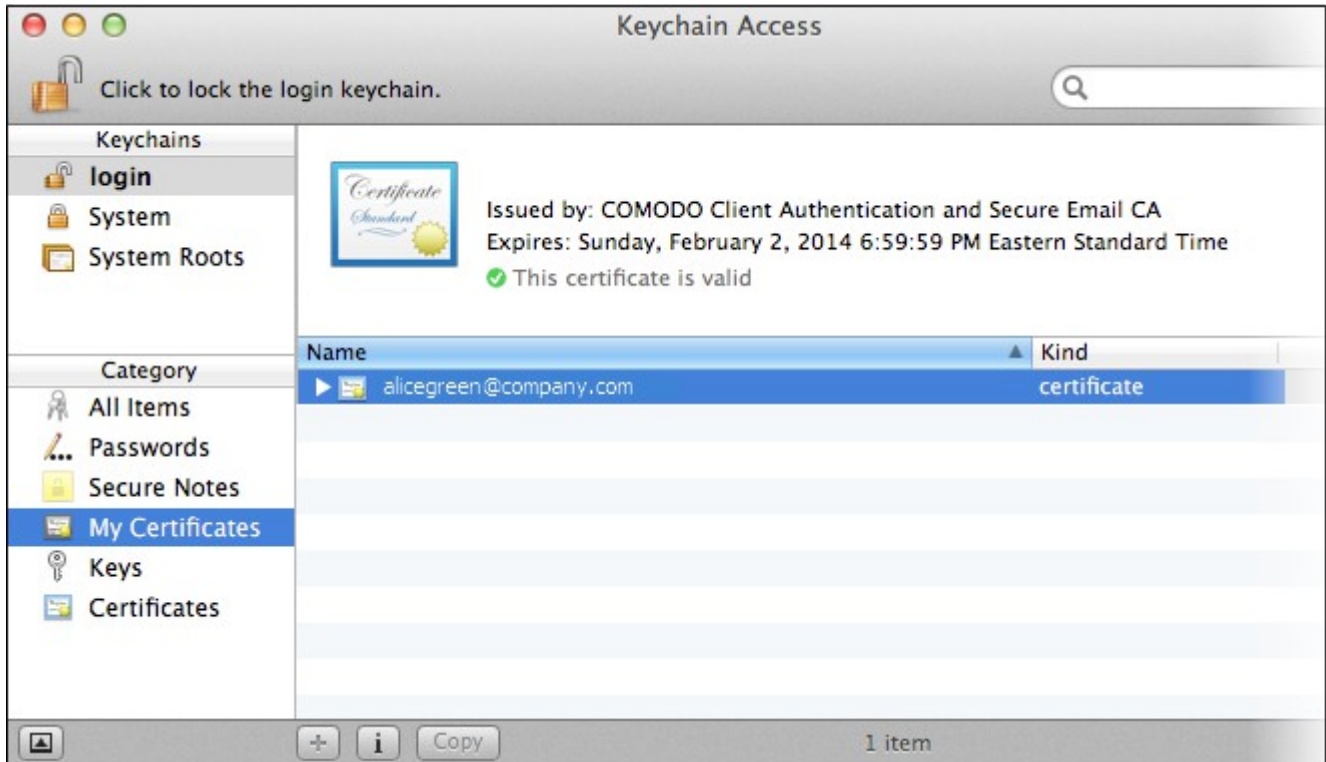


5. Navigate to the location of your saved certificate file and click '**Open**'.



6. Enter the key pair's password and click '**OK**'. Note: If prompted whether to trust certificates issued by your CA automatically, select the **Always Trust** option to trust and install your certificate.

The certificate will be installed and can be viewed by clicking **Category > My Certificates** in the Keychain Access utility.





# About Comodo

The Comodo organization is a global innovator and developer of cyber security solutions, founded on the belief that every single digital transaction deserves and requires a unique layer of trust and security. Building on its deep history in SSL certificates, antivirus and endpoint security leadership, and true containment technology, individuals and enterprises rely on Comodo's proven solutions to authenticate, validate and secure their most critical information.

With data protection covering endpoint, network and mobile security, plus identity and access management, Comodo's proprietary technologies help solve the malware and cyber-attack challenges of today. Securing online transactions for thousands of businesses, and with more than 85 million desktop security software installations, Comodo is Creating Trust Online®. With United States headquarters in Clifton, New Jersey, the Comodo organization has offices in China, India, the Philippines, Romania, Turkey, Ukraine and the United Kingdom.

**Comodo Security Solutions, Inc.**

1255 Broad Street

Clifton, New Jersey 07013

United States

Tel : +1.888.266.6361

Tel : +1.703.581.9361

Email: [sales@Comodo.com](mailto:sales@Comodo.com)**Comodo CA Limited**

3rd floor, Office Village Exchange Quay

Trafford Road, Salford, Manchester M5 3EQ

United Kingdom

Tel : +44 (0) 161 874 7070

Fax : +44 (0) 161 877 1767

For additional information on Comodo - visit <https://www.comodo.com>